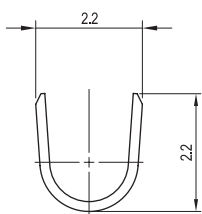
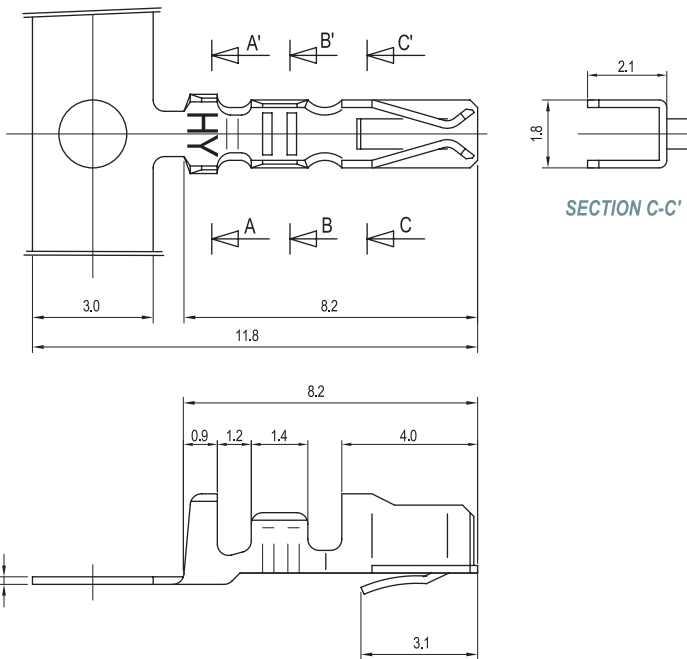
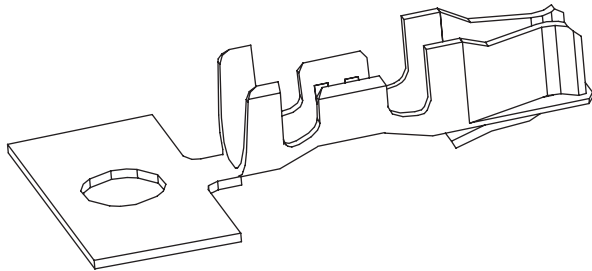


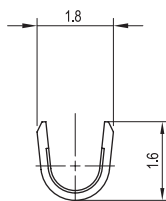
2.50mm (0.098") PITCH CONNECTOR

Wire-to-Board
Crimp Terminal

YT250



SECTION A-A'



SECTION B-B'

Material

| I/NO | DESCRIPTION | TITLE | AWG | MATERIAL | FINISH |
|------|-------------|-------|---------|-----------------|------------|
| 1 | TERMINAL | YT250 | #22~#28 | Phosphor Bronze | Tin-Plated |

Specification

| ITEM | SPEC |
|------------------------|---------------------|
| Voltage Rating | AC/DC 250V |
| Current Rating | AC/DC 3A |
| Operating Temperature | -25℃~+85℃ |
| Contact Resistance | 30mΩ MAX |
| Withstanding Voltage | AC1000V/1min |
| Insulation Resistance | 1000MΩ MIN |
| Applicable Wire | AWG #22~#28 |
| Applicable P.C.B | - |
| Applicable FPC/FFC | - |
| Solder Height | - |
| Crimp Tensile Strength | AWG #22 : 2.5kgfMIN |
| | AWG #24 : 2.0kgfMIN |
| | AWG #26 : 1.5kgfMIN |
| | AWG #28 : 1.0kgfMIN |
| UL FILE NO | - |