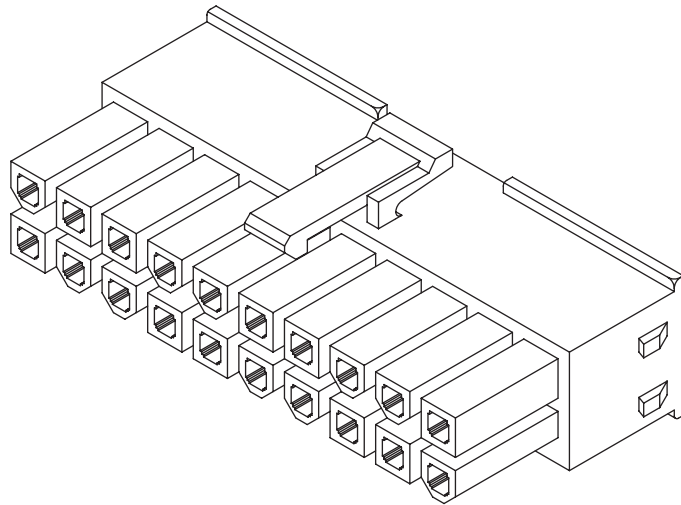


# 4.20mm (0.165") PITCH CONNECTOR

Wire-to-Board  
Housing

SMH420-NNB Series

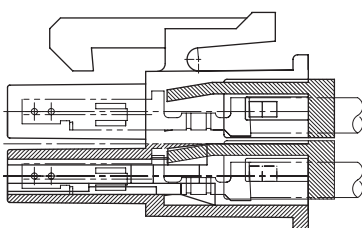
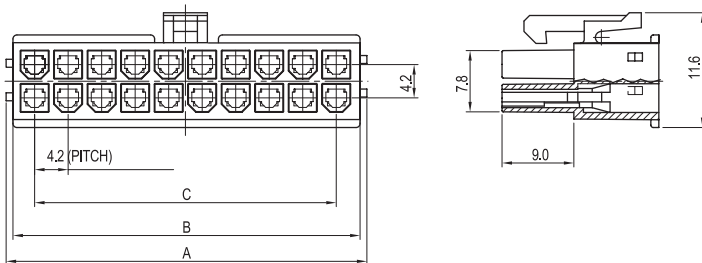
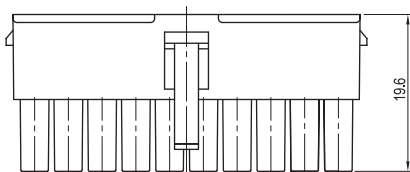


## Material

I/NO	DESCRIPTION	TITLE	MATERIAL
1	HOUSING	SMH420-NNB	PA66, UL94 V Grade

## Available Pin

PARTS NO.	A	B	C
SMH 420- 04B	11.4	9.80	4.2
SMH 420- 06B	15.6	14.0	8.4
SMH 420- 08B	19.8	18.2	12.6
SMH 420- 10B	24.0	22.4	16.8
SMH 420- 12B	28.2	26.6	21.0
SMH 420- 14B	32.4	30.8	25.2
SMH 420- 16B	36.6	35.0	29.4
SMH 420- 18P	40.8	39.2	33.6
SMH 420- 20B	45.0	43.4	37.8
SMH 420- 22B	49.2	47.6	42.0
SMH 420- 24B	53.4	51.8	46.2



TERMINAL ASSEMBLY DRAWING



AWG : #16 ~ #20

## Specification

ITEM	SPEC
Voltage Rating	AC/DC 600V
Current Rating	AC/DC 9A
Operating Temperature	-25°C ~ +85°C
Contact Resistance	30mΩ MAX
Withstanding Voltage	AC1500V/1min
Insulation Resistance	1000MΩ MIN
Applicable Wire	AWG #16~#20
Applicable P.C.B	1.2~1.6mm
Applicable FPC/FFC	-
Solder Height	-
Crimp Tensile Strength	-
UL FILE NO	-

Application Terminal : SMT420 (199 page)