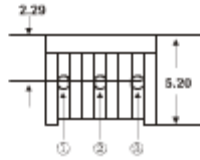




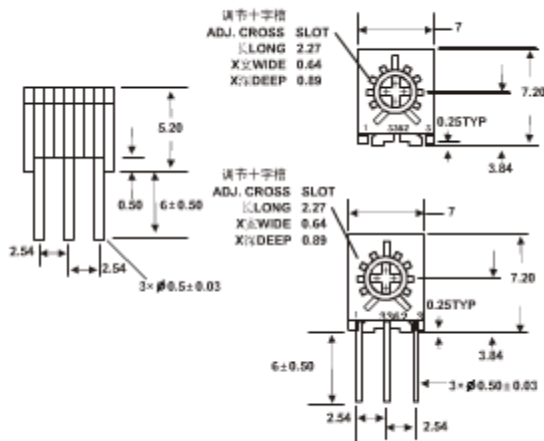
7×7.2 Square/Single Turn/Trimming Potentiometer

-- 3362M--

... Install dimension



... Mutual dimension



Standard Resistance Table

Resistance(Ohms)	Resistance Code
10	100
20	200
50	500
100	101
200	201
500	501
1,000	102
2,000	202
5,000	502
10,000	103
20,000	203
25,000	253
50,000	503
100,000	104
200,000	204
250,000	254
500,000	504
1,000,000	105
2,000,000	205

Special resistances available

Electrical Characteristics

Standard Resistance Range.....50Ω~2MΩ
 Resistance Tolerance.....±10%
 Absolute Minimum Resistance.....≤1%R或10Ω
 Contact Resistance Variation.....CRV≤3%或5Ω
 Insulation Resistance.....R1≥1GΩ
 (500Vac)
 Withstand Voltage.....700Vac
 Effective Travel.....250°C

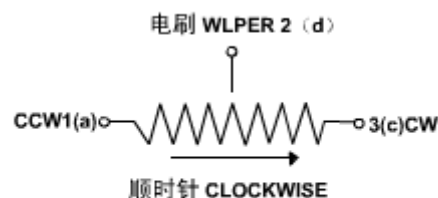
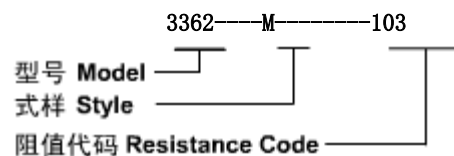
Environmental Characteristics

Power Rating, 300 volts max
0.5W@70°C,0W@125°C
 Temperature Range.....-55°C~
 125°C
 Temperature Coefficient.....±250ppm/°C
 Temperature Variation.....-55°C,30min,+125°C
30min
 5cycles
ΔR≤5%R, Δ(Uab/Uac)≤5%
 Vibration.....10~
 500Hz,0.75mm,6h
ΔR≤5%R, Δ(Uab/Uac)≤±7.5%R
 Collision.....390m/s²,4000cycles ΔR≤5%R
 Electrical Endurance at 70°C.....0.5W@70°C
1000h, ΔR≤10%R,R1≥100MΩ
 Rotational Life.....200cycles
ΔR≤10%R,CRV≤3% or 5Ω

Physical Characteristics

Starting Torque.....≤

How To Order



图中公式：除注明外均为±0.25
 Tolerance is ± 0.25 If no identification