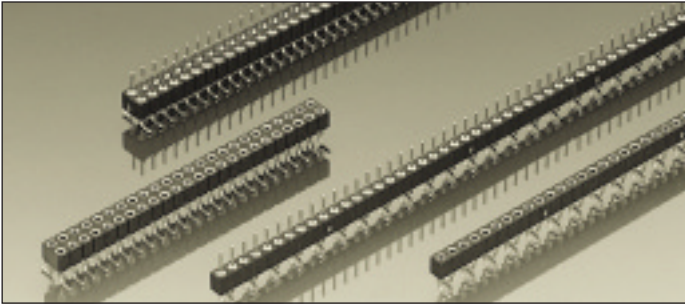
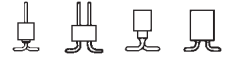


## Series 830

PCB connectors 2.0 mm  
Single row / double row  
Surface mount



### "Hard metric" PCB receptacles and pin connectors, surface mount






Grid spacing 2.0×2.0 mm

Receptacles for pins

Ø 0.40–0.56 mm

Screw machined pins Ø 0.46–0.47 mm

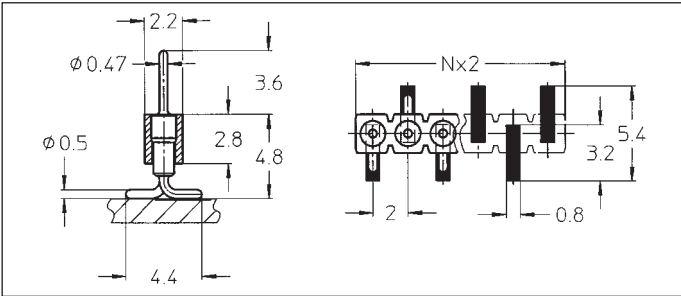
For corresponding connectors see pages 18, 19 and 21

Platings	Sleeve 	Clip 	Pin 
10			0.25 µm Au
90			5 µm Sn Pb
91	5 µm Sn Pb	0.25 µm Au	
93	5 µm Sn Pb	0.75 µm Au	
99	5 µm Sn Pb	5 µm Sn Pb	

### Ordering information

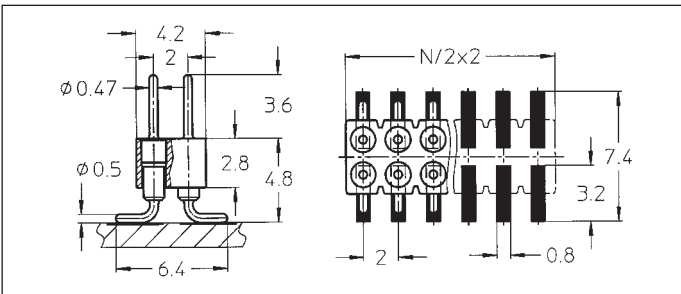
Replace **xxx** with the number of poles, e.g. 833-91-**xxx**-30-001 for a double row version with 8 pins per row becomes:

833-91-**016**-30-001



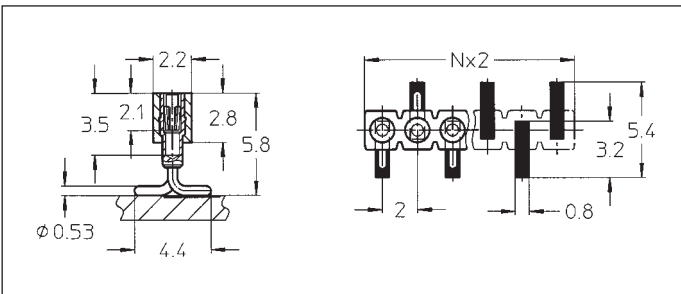
830-10-xxx-30-001  
830-90-xxx-30-001

SMD pin connector: single row, perpendicular mount  
Availability from: 3 to 50 contacts  
Standard number of contacts 50



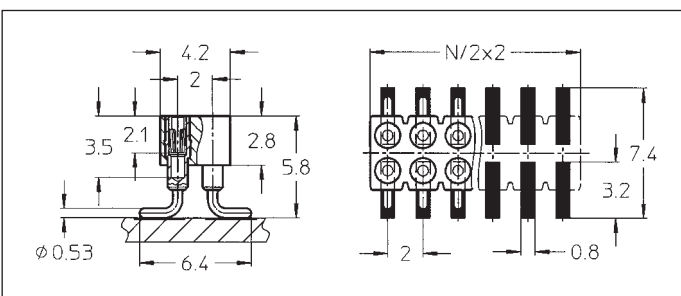
832-10-xxx-30-001  
832-90-xxx-30-001

SMD pin connector: double row, perpendicular mount  
Availability from: 4 to 100 contacts  
Standard number of contacts 100



831-91-xxx-30-001  
831-93-xxx-30-001  
831-99-xxx-30-001

SMD receptacle: single row, perpendicular mount  
Availability from: 3 to 50 contacts  
Standard number of contacts 50



833-91-xxx-30-001  
833-93-xxx-30-001  
833-99-xxx-30-001

SMD receptacle: double row, perpendicular mount  
Availability from: 4 to 100 contacts  
Standard number of contacts 100