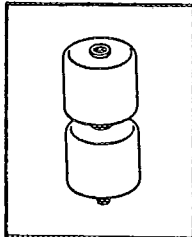


PRELIMINARY DATA SHEET

<p>SDA2025 THROUGH SDA2032</p> <p>HIGH VOLTAGE STACKABLE RECTIFIER ASSEMBLY</p>	<p>SSDI</p>
	<p>14849 FIRESTONE BLVD. LA MIRADA, CA. 90638 (213) 921-9660 FAX 213-921-2396</p>

CASE STYLE



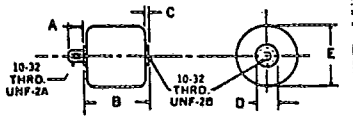
FEATURES

- ▶ PIV TO 15KV
- ▶ STACKABLE TO 600KV
- ▶ HIGH CURRENT RATINGS
- ▶ CONTROLLED AVALANCHE
- ▶ VOID FREE HERMETICALLY SEALED  
DIODE CELLS
- ▶ MODULAR DESIGN FOR EASY STACKING
- ▶ STORAGE AND OPERATING TEMPERATURE  
-65 °C TO +150 °C

SSDI introduces a new and complete line of high voltage transfer molded stackable diode modules. These modules utilize double plug metallurgically bonded void free hermetically sealed diode cells. Higher voltage and/or current modules can be supplied. Ultra fast recovery modules to 50 nano seconds are available. Contact your component specialist for engineering assistance.

TYPE	PIV	AVERAGE DC OUT-PUT AMPS TC		PEAK 1 CYCLE FORWARD SURGE	MAXIMUM FORWARD VOLTAGE DROP	MAXIMUM LEAKAGE CURRENT @ PIV		REPLACES UNITRODE PART NUMBER
		AIR	OIL			25 °C	100 °C	
		25 °C	50 °C					
		AMPS	AMPS			AMPS	VOLTS	
SDA2025	2.5	1.10	2.30	80	5V @ 1.1A	10	200	USB2.5
SDA2026	5	0.60	1.10	25	9V @ .6A	5	100	USS5
SDA2027	5	0.68	1.50	80	9V @ .7A	10	200	USB5
SDA2028	7.5	0.45	0.91	25	13V @ .5A	5	100	USS7.5
SDA2029	7.5	0.53	1.20	80	13V @ .7A	10	200	USB7.5
SDA2030	10	0.35	0.71	25	17V @ .3A	5	100	USS10
SDA2031	10	0.43	1.00	80	17V @ .4A	10	200	USB10
SDA2032	15	0.25	0.51	25	25V @ .2A	5	100	USS15

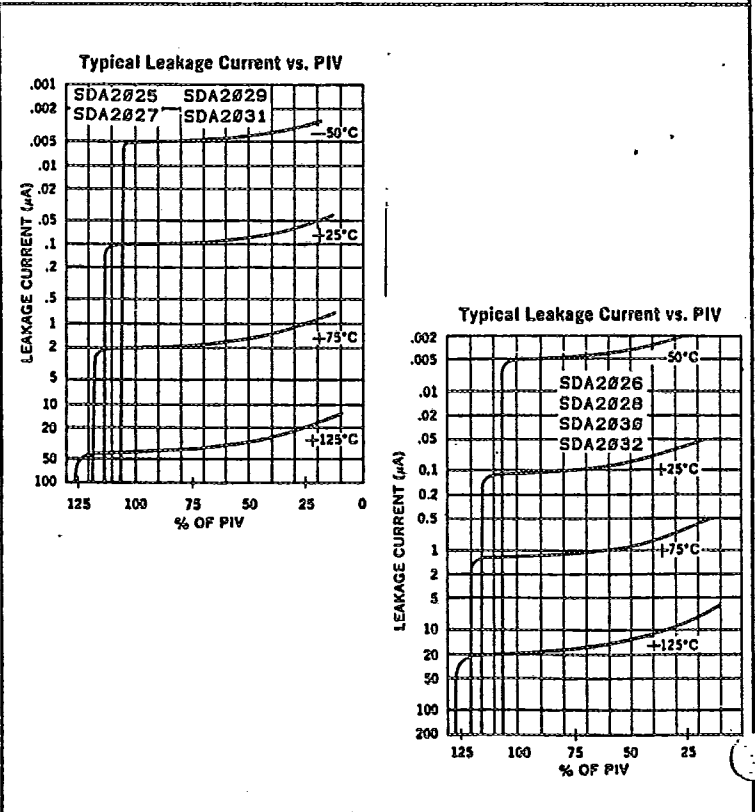
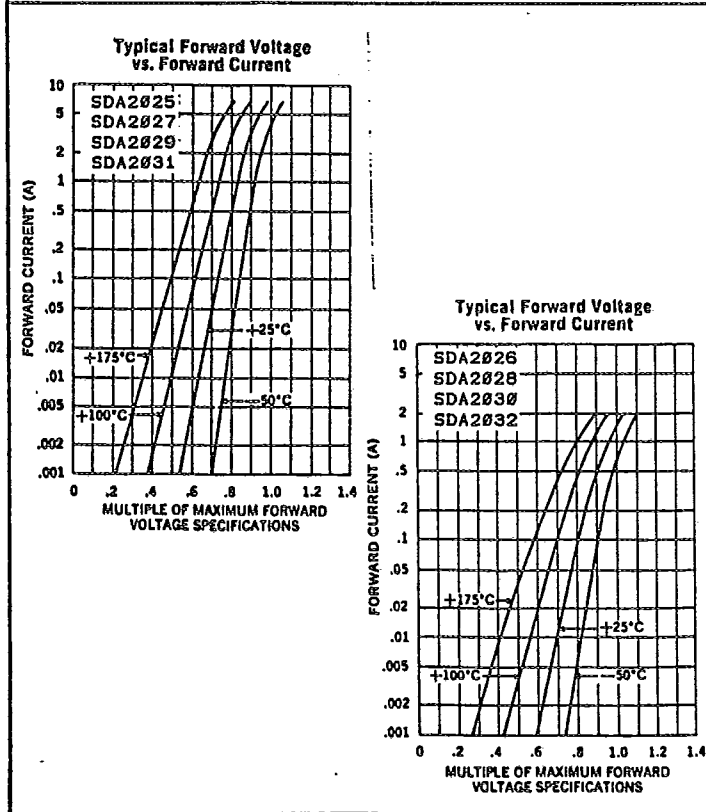
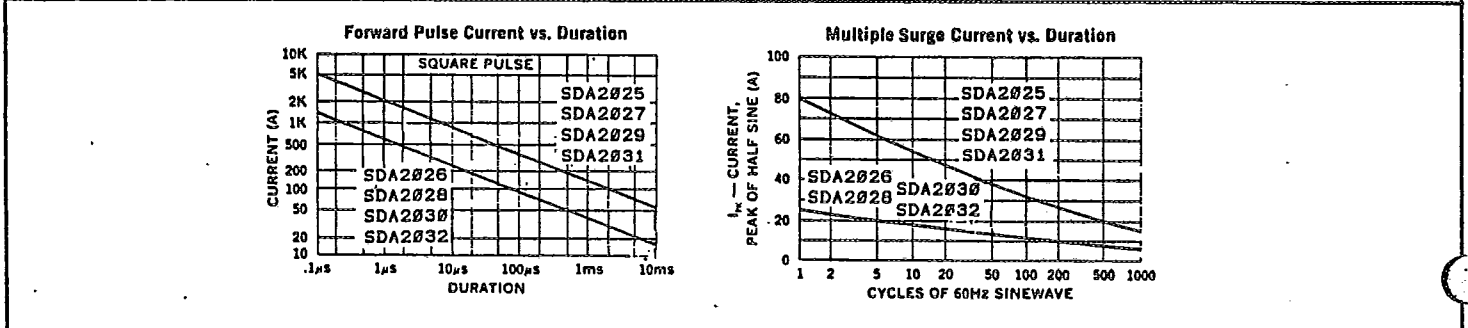
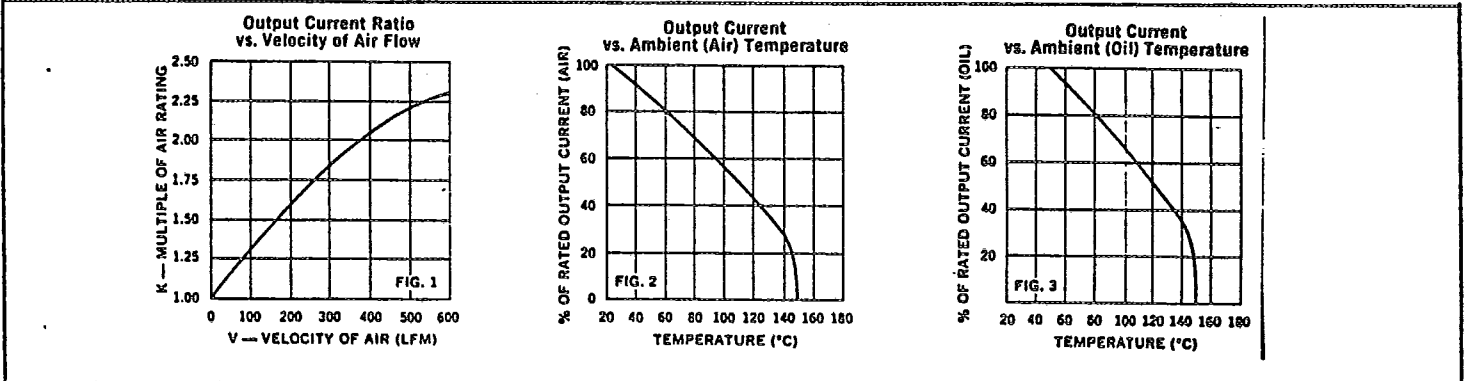
Note: Specifications subject to change without notice.



SOLID STATE DEVICES INC

	Inches	mm
A	.230-.235	5.84- 5.97
B	.980-1.10	24.89-27.94
C	.020-.040	0.51- 1.02
D	.320-.330	8.13- 8.38
E	.97 -1.00	24.64-25.40

TYPICAL OPERATING CURVES



SSDI

SOLID STATE DEVICES, INC.

14849 FIRESTONE BOULEVARD, LA MIRADA, CA. 90638  
 TELEPHONE (213) 921-9660 ♦ FAX (213) 921-2396