

## PRISM® 3 11 Mbps Wireless Local Area Network PCMCIA



The Intersil ISL37105P WLAN PCMCIA (Note 1) is a complete wireless high speed Network

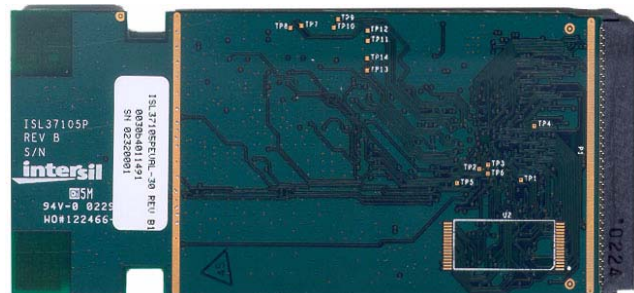
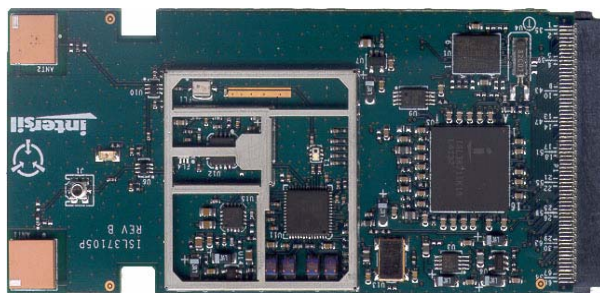
Interface Card (NIC) utilizing the Intersil PRISM 3 Direct Sequence Spread Spectrum (DSSS) Wireless Transceiver chip set. It provides a complete PRISM 3 reference design evaluation platform of hardware and software to system providers or integrators requiring wireless data communications capability and is ideal for integration into computer platforms.

Evaluation kits include a pair of WLAN PCMCIA cards designed to Intersil's PRISM reference design, Microsoft® Windows® Driver, Local Area Network evaluation software, PRISM Transmitter Test Utilities (PTTU) software (Note 3) and documentation to get your evaluation started quickly. It supports the IEEE802.11b network specification for DSSS signaling, providing data rates of 1, 2, 5.5 and 11Mbps. Access Points are available from a number of suppliers, enabling a total wireless network solution. Typical operating ranges are shown in Table 1.

**TABLE 1. TYPICAL OPERATING RANGE (Note 2)**

DATA RATE (Mbps)	INDOOR RANGE	OUTDOOR RANGE
11	120 feet (37 meters)	400 feet (152 meters)
5.5	200 feet (61 meters)	800 feet (243 meters)
2	240 feet (73 meters)	1300 feet (396 meters)
1	300 feet (91 meters)	1750 feet (533 meters)

## Packaging



## Features

- FCC Certified Under Part 15 to Operate in 2.4GHz ISM Band
- Support for 11, 5.5, 2 and 1Mbps Data Rates
- Supports the IEEE802.11b Direct Sequence Specification
- Driver Supports Microsoft Windows 95, 98, 2000, NT, CE, ME and XP
- Supports Dual Diversity Antennas
- Advanced RAKE Receiver Design with Decision Feedback Equalizer
- Provides Wireless Data Communications at Full Ethernet Speed
- Designed to Fully Support PCMCIA Type II Defined Mechanical and Environmental Stress Conditions
- Intelligent Power Control, Including Low Power Standby Mode
- Complete Reference Design, the ISL37105P-CD is available to ensure minimum time-to-market.

## Ordering Information

PART NUMBER	DESCRIPTION	CARDS/SET
ISL37105P-EVAL	WLAN Evaluation Kit	2
ISL37105P-CD	Reference Design	N/A

## NOTES:

1. Throughout this document, all references to, 'PCMCIA', 'WLAN adapter', 'adapter', or 'card' refer to a card assembly conforming to the mechanical size specifications of the PCMCIA type 3A.
2. The range will vary in different operating environments due to effects such as building construction.
3. At present, PTTU supports Windows 95, 98, NT, 2000 and ME