

TRIAC (NON-ISOLATED TYPE) TO-3P PACKAGE

TMG40C60

$I_{T(RMS)}=40A$, $V_{DRM}=600V$

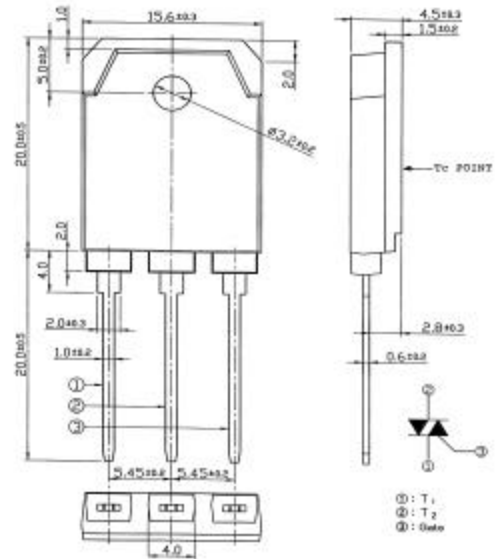
SanRex Triac **TMG40C60** is designed for full-wave AC control applications. It can be used as an ON/OFF function or for phase control operations.

Features

- * Glass-passivated junctions
- * High Surge Current

Typical Applications

- * Heater Control
- * Motor Control
- * Lighting Control
- * Power Supplies



< Maximum Ratings >

(T_j = 25°C Unless Otherwise Specified)

Symbol	Item	Conditions	Ratings	Unit
V _{DRM}	Repetitive Peak Off-State Voltage		600	V
I _{T(RMS)}	R.M.S. On-state Current	T _c = 71°C	40	A
I _{TSM}	Surge On-state Current	One cycle, 60Hz, peak value, non-repetitive	330	A
I ² t	I ² t (for fusing)		450	A ² s
P _{GM}	Peak Gate Power Dissipation		5	W
P _{G(AV)}	Average Gate Power Dissipation		0.5	W
I _{GM}	Peak Gate Current		2	A
V _{GM}	Peak Gate Voltage		10	V
T _j	Operation Junction Temperature		-40 to +125	°C
T _{stg}	Storage Temperature		-40 to +125	°C
	Mass		6.2	g

< Electrical Characteristics >

(T_j = 25°C Unless Otherwise Specified)

Symbol	Item	Conditions	Ratings			Unit
			Min.	Typ.	Max.	
I _{DRM}	Repetitive Peak Off-state Current	V _D = V _{DRM} , T _j = 125°C, Single phase, half wave			5	mA
V _{TM}	Peak On-state Voltage	I _T = 56A, Inst. Measurement			1.85	V
I _{GT1+}	Gate Trigger Current	V _D = 6V, R _L = 10Ω			50	mA
I _{GT1-}					50	
I _{GT3+}					-	
I _{GT3-}					-	
V _{GT1+}	Gate Trigger Voltage				2	V
V _{GT1-}					2	
V _{GT3+}					-	
V _{GT3-}					2	
V _{GD}	Non-trigger Gate Voltage	T _j = 125°C, V _D = 1/2 V _{DRM}	0.2			V
(dv/dt) _C	Critical Rate of Rise of Off-State Voltage at Commutation	T _j = 125°C, V _D = 2/3 V _{DRM} (di/dt) _C = -12.5A/ms	6			V/Fs
I _H	Holding Current			35		mA
R _{th(j-c)}	Thermal Resistance	Junction to case			1	°C/W