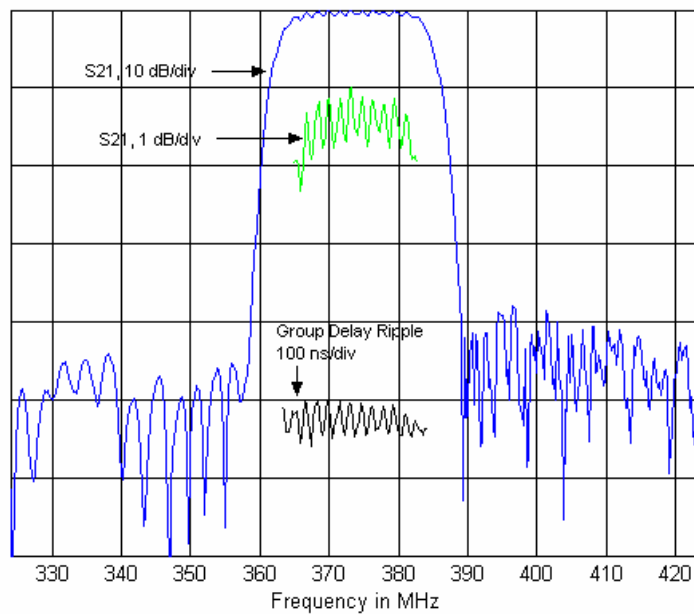
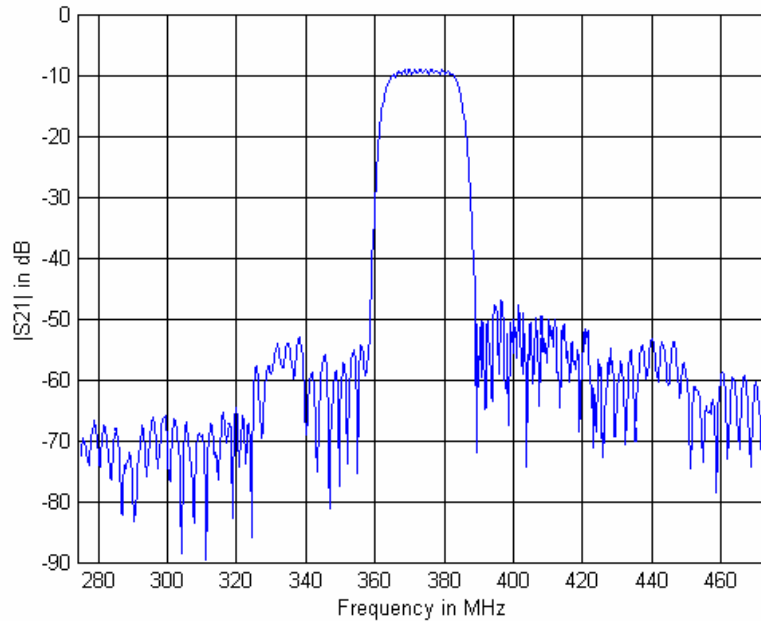




DESCRIPTION

374 MHz Surface Acoustic Wave (SAW) filter to be used as the IF filter in wireless LAN equipment.

TYPICAL PERFORMANCE





MAXIMUM RATING

Parameter	Min	Max	Units
Operating Temperature Range	-20	+80	°C
Storage Temperature Range	-40	+85	°C
Input Power Level		10	dBm
Max. D. C. Voltage between Each Terminal		0	V

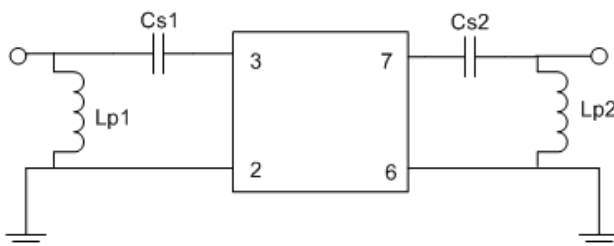
SPECIFICATION

Parameter	Min	Typ	Max	Units
Center Frequency (Fc)		374.0		MHz
Insertion Loss		8.5	10	dB
Bandwidth (3dB)	17	21		
Amplitude Ripple ¹		0.6	1.5	dB
Rejection, 274 to 324 MHz	48	52		dB
Rejection, 324 to 352 MHz	40	44		dB
Rejection, 352 to 357.5	30	42		dB
Rejection, 390.5 to 396	30	38		dB
Rejection, 396 to 417	33	38		dB
Rejection, 417 to 474	40	45		dB
Group Delay Variation ¹		40	100	nsec
Triple Transit Suppression	30	35		dB

Note: 1. Over $F_c \pm 7$ MHz

TEST CIRCUIT

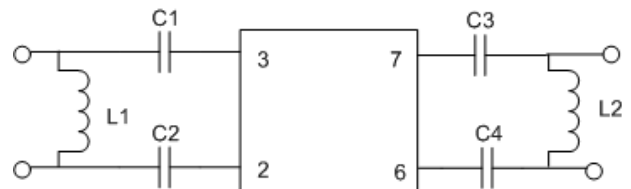
A) Matched to 50 Ω single ended input/output



Cs1 = 27 pF
Lp1 = 10 nH

Cs2 = 33 pF
Lp2 = 10 nH

B) Matched to 200 Ω balanced input/output

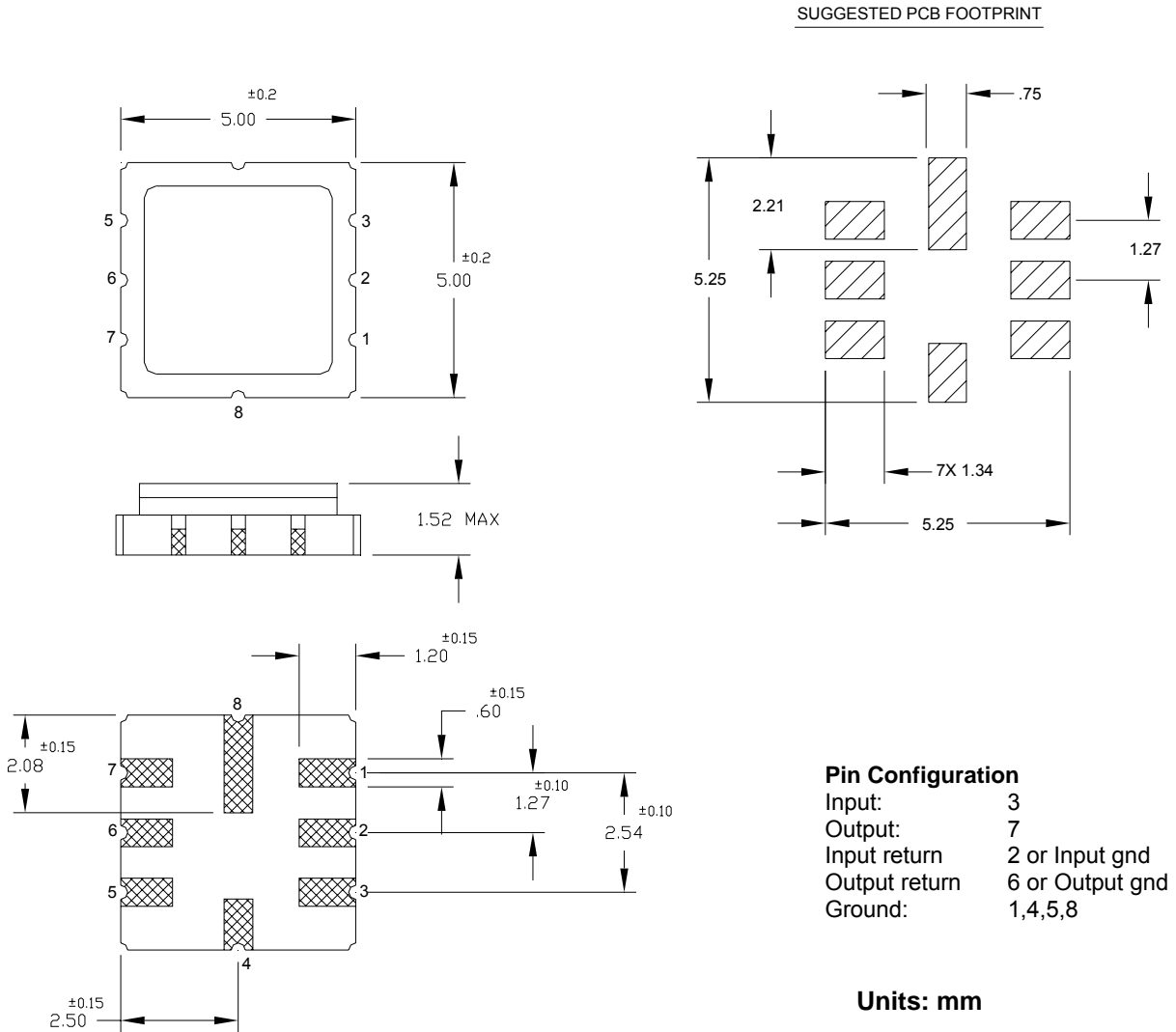


C1, C2 = 18 pF
Lp1 = 18 nH

C3, C4 = 18 pF
Lp2 = 18 nH



PACKAGE OUTLINE AND RECOMMENDED PCB FOOTPRINT



All specifications are believed to be accurate and reliable. However, ICS reserves the right to make changes without notice.
© 2005 Integrated Circuit Systems, Inc. All rights reserved.