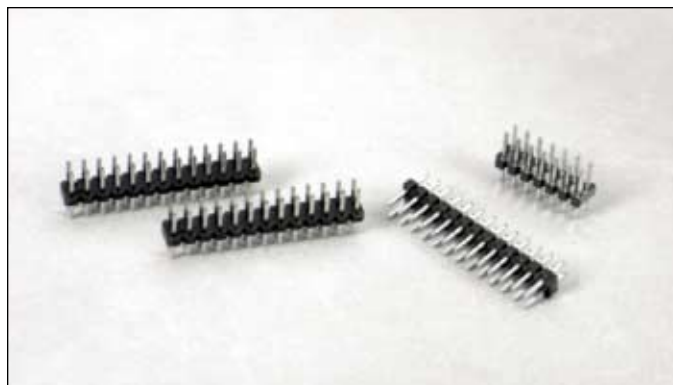


.079" (2mm) Dual Row Through Hole Vertical Headers



8100 SERIES "POST/BOXE"

PART NUMBER LEGEND

810X-11-2XX-XX

PIN LENGTH
DIM C **DIM D** **DIM E**
 1 = 4.00 (1.57) 2.60 (.102) 8.10 (.319)
 7 = .050 (1.27) 2.45 (.096) 6.40 (.252)

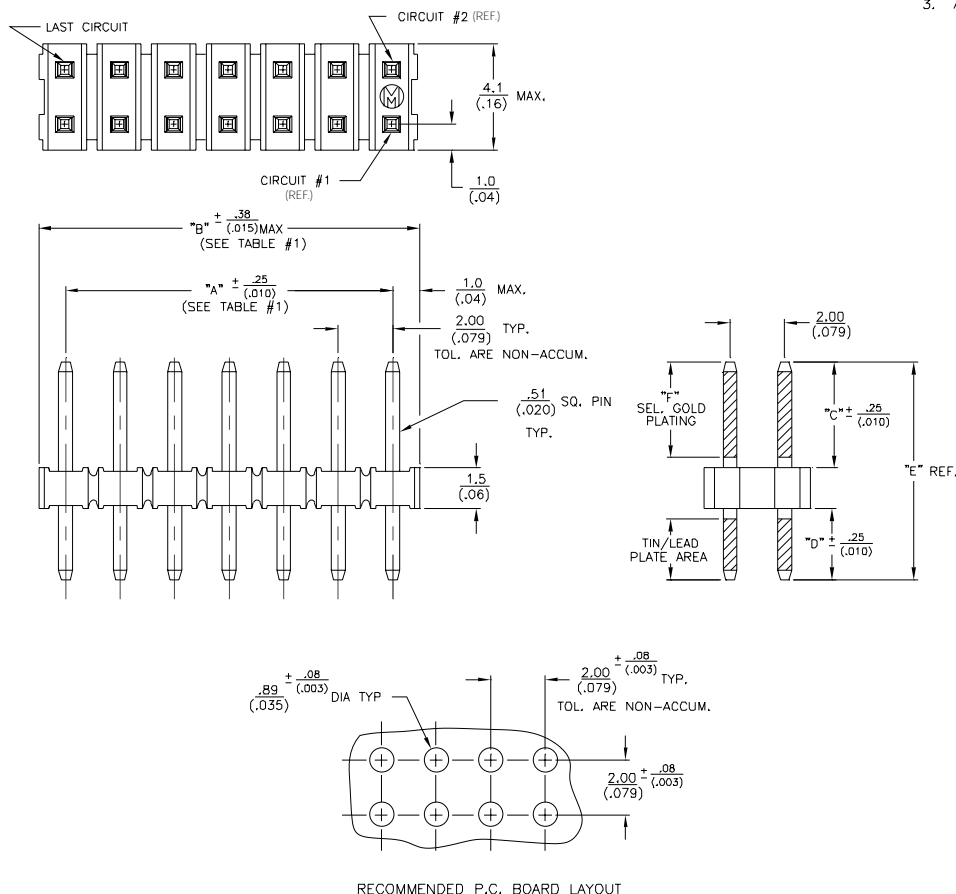
NUMBER OF POSITIONS PER ROW
 2 - 25

CONTACT FINISH
 0 = TIN/LEAD
 8 = .000030 SELECTIVE GOLD
 F = .000015 SELECTIVE GOLD

MATING CONNECTORS: 8000 SERIES

NOTES:

- INSULATOR MATERIAL: NYLON, GLASS FILLED, UL 94V-0.
 COLOR: BLACK
 PIN MATERIAL: PHOSPHOR BRONZE.
- PIN FINISH:
 - TIN PLATING
 - SEL. GOLD OVER NICKEL IN MATING AREA WITH TIN PLATING ON SOLDER TAIL
- ALL DIMENSIONS ARE IN MM/(IN).



PART NUMBER	NO. OF CIRCUITS	DIM. "A"	DIM. "B"
810X-11-202-XX	4	2.00 (.079)	4.00 (.157)
-203-	6	4.00 (.157)	6.00 (.236)
-204-	8	6.00 (.236)	8.00 (.315)
-205-	10	8.00 (.315)	10.00 (.394)
-206-	12	10.00 (.394)	12.00 (.472)
-207-	14	12.00 (.472)	14.00 (.551)
-208-	16	14.00 (.551)	16.00 (.630)
-209-	18	16.00 (.630)	18.00 (.709)
-210-	20	18.00 (.709)	20.00 (.787)
-211-	22	20.00 (.787)	22.00 (.866)
-212-	24	22.00 (.866)	24.00 (.945)
-213-	26	24.00 (.945)	26.00 (1.024)
-214-	28	26.00 (1.024)	28.00 (1.102)
-215-	30	28.00 (1.102)	30.00 (1.181)
-216-	32	30.00 (1.181)	32.00 (1.260)
-217-	34	32.00 (1.260)	34.00 (1.339)
-218-	36	34.00 (1.339)	36.00 (1.417)
-219-	38	36.00 (1.417)	38.00 (1.496)
-220-	40	38.00 (1.496)	40.00 (1.575)
-221-	42	40.00 (1.575)	42.00 (1.654)
-222-	44	42.00 (1.654)	44.00 (1.732)
-223-	46	44.00 (1.732)	46.00 (1.811)
-224-	48	46.00 (1.811)	48.00 (1.890)
810X-11-225-XX	50	48.00 (1.890)	50.00 (1.968)

PART NUMBER	DIM. "C"	DIM. "D"	DIM. "E"	DIM. "F"
810X-11-2XX-01	4.00 (.157)	2.60 (.102)	8.10 (.319)	3.05 (.120)
810X-11-2XX-02	2.45 (.096)	2.45 (.096)	6.40 (.252)	2.03 (.080)