

Ethernet DC/DC Converter EPC1108P & EPC1108H

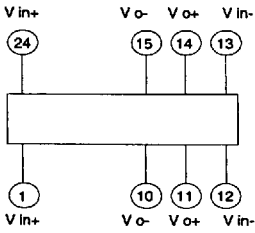
- Features**
- 70 % Typical efficiency at full load @ nominal input voltage
 - Regulated Output
 - Input / Output Isolation
 - Input filter to reduce input ripple current
 - Designed for low common mode noise

Electrical Specifications

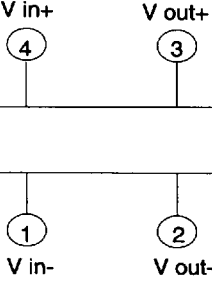
*Note : Package with G = Surface Mount Device, ††: E1,E1-G,E4,E4-G,E11,Q,Q1

PCA P/N	Standard Package	Optional Packages	Input Voltage V	Output Voltage V	Output Current mA Max.	Output Ripple & Noise @ 20 MHz BW mV p-p	Isolation Vrms
EPC1108P	E	E-G*, F2,N1,††	5.0 ± 10%	5.0 ± 5%	20 Max.	100 Max.	500
EPC1108H	E1	E1-G*,E11,N1,Q1	5.0 ± 10%	5.0 ± 5%	20 Max.	100 Max.	2000

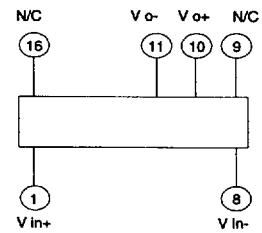
Pin Connections for E



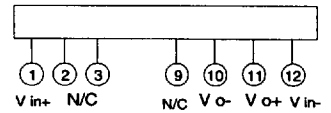
Pin Connections for Q1



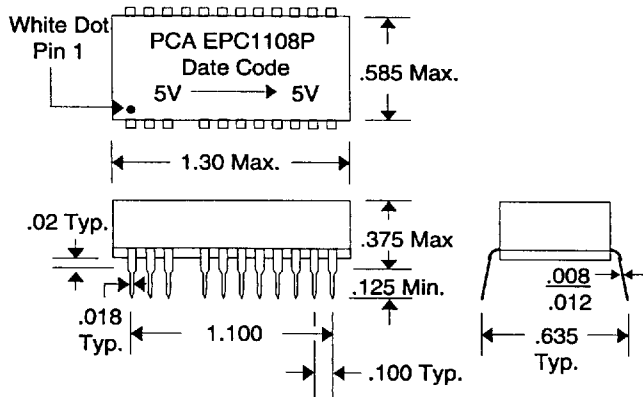
Pin Connections for N1



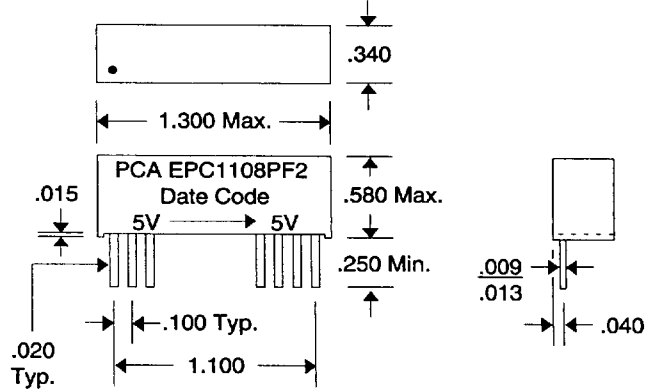
Pin Connections for F2



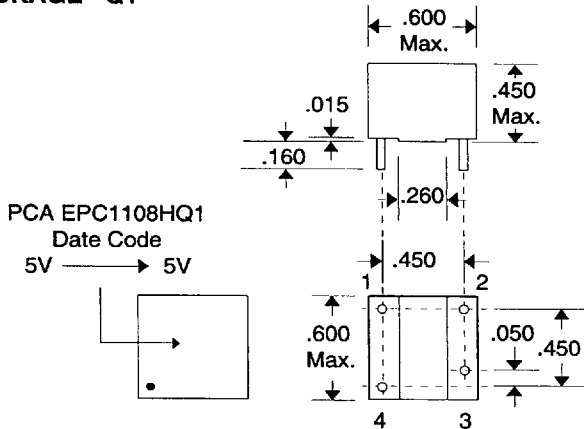
PACKAGE E



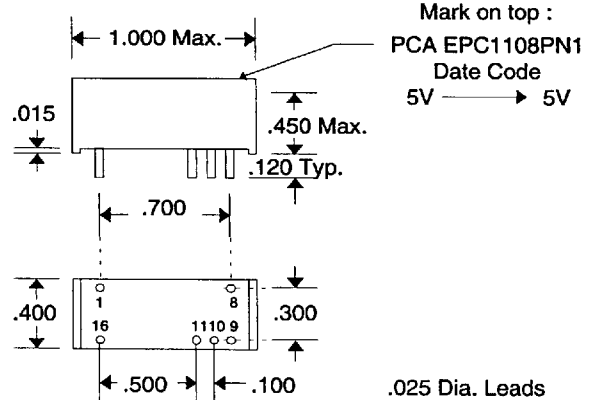
PACKAGE F2



PACKAGE Q1



PACKAGE N1



Mark on top :
PCA EPC1108PN1
Date Code
5V → 5V

.025 Dia. Leads

DSC1108 Rev.- 4/4/96

QAF-CSO6 Rev. B 9/9/94

Unless Otherwise Noted Dimensions in Inches

Tolerances:
Fractional = ± 1/32
.XX = ± .030 .XXX = ± .010



16799 SCHOENBORN ST.
NORTH HILLS, CA 91343
TEL: (818) 892-0761
FAX: (818) 894-5791

6852109 0000621 471