

# PAW588

40-550 MHz.

34 dB.

CATV Ultra-linear Amplifier



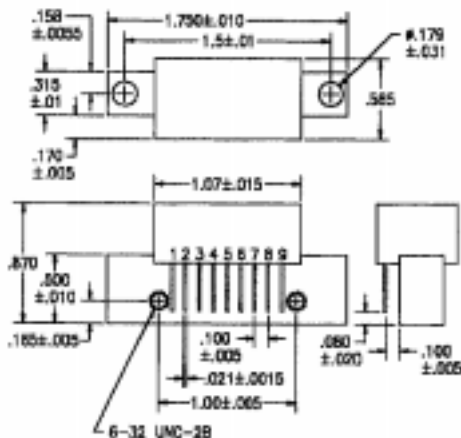
### Features: (typical values)

- Ultra High Linearity
- Low Noise Figure
- Rugged Construction
- Operation over a wide voltage range
- Usable for 50 ohm operation

### Specifications @Tcase = 30°C (Referenced to 75 ohms)

Parameter	Typical Conditions	Min. Value	Max. Value	Units
Frequency Range		40	550	MHz.
Power Gain	f=50 MHz.	33.5	35.5	dB.
Gain Flatness (peak to valley)	f=40 to 550 MHz.		+/- 0.8	dB.
Input/Output Return Loss	f=40 to 550 MHz.	16		dB.
Composite Triple Beat (CTB)	77 channels flat Vo=44dBmV. measured @ channel 78		-57	dB.
Cross Modulation (XMOD)	77 channels flat Vo=44dBmV. measured @ channel 2		-57	dB.
Composite 2nd. Order	77 channels flat Vo=44dBmV. measured @ channel 78		-57	dB.
IP3 / IP2	2 tone	42/60		dBm.
Noise Figure	@ f= 550 MHz.		6.5	dB.
Total Current	@ Voltage of +24v.		340	mA.

### Outline Drawings



### Maximum Ratings

- Storage Temperature ..... -40°C to +100°C
- DC Voltage ..... +28 volts
- RF Input voltage ..... 40dBmV.
- Operating Base Temperature ..... +100°C

### Pin Configuration

Pin #	Description
1	Input
2,3,7,8	Ground
5	+V
4,6	not used
9	Output