



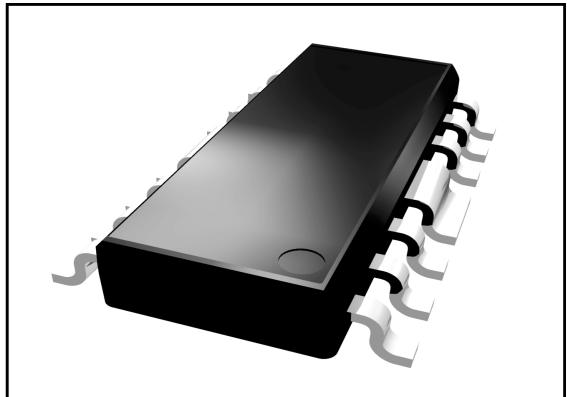
ADA10001S3C
 Linear Amplifier MMIC
 Data Sheet - Rev. 1

FEATURES

- High Linearity ($IIP_3 + 18 \text{ dBm}$)
- Low Noise Figure (2.0 dB)
- Single Supply (+8Vdc)
- Wide Bandwidth (50MHz - 1 GHz)

APPLICATIONS

- Driver Amplifier
- CATV - Distribution / Drop Amplifiers



S3C
16 Pin SOIC Package

DESCRIPTION:

The ADA10001 is a monolithic IC intended for use in applications requiring high linearity such as: Cellular Telephone Base Station Driver Amplifiers, CATV Fiber Receiver/Distribution Amplifiers and CATV Drop Amplifiers. Supplied in a surface mount, 16 lead-SOIC package, it is well suited for use in amplifiers where small size, reduced component count, and high reliability are important.

ABSOLUTE MAXIMUM RATINGS

PARAMETER	MIN.	MAX.	UNITS
V_{DD}/V_{RFOUT}	0	12	V_{DC}
V_{RFIN}		0	V_{DC}
RF_{IN}		+ 10	dBm
Storage Temperature	- 65	+150	°C
Soldering Temperature		260	°C
Soldering Time		5.0	Sec.
Thermal Resistance		35	°C/W

ELECTRICAL SPECIFICATIONS(T_A = +25 °C, R_F = 50 to 1000 MHz, Test System = 75Ω, V_{DD} = + 8V_{DC})

PARAMETER	MIN.	TYP.	MAX.	UNITS
CSO ²	60			dBc
CTB ²	65			dBc
Gain	14	15		dB
Noise Figure		2.0	3.5	dB
2nd Order Input Intercept Point (IIP2) ³	+35	+38		dBm
3rd Order Input Intercept Point (IIP3) ³	+15	+18		dBm

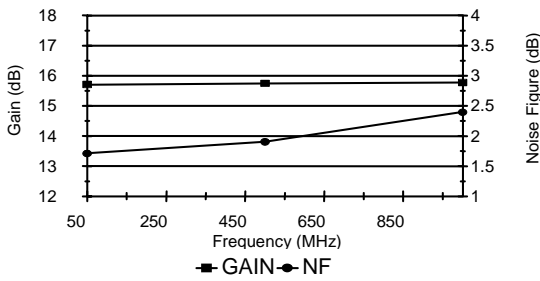
1. The device can be operated at + 6 V_{DC} for lower power dissipation; Refer to the figures on page 3 for performance variation with supply voltage.
2. 160 channels, + 23 dBmV per channel, (measured at the output) 6 MHz channel spacing.
3. Two tones, - 10 dBm per tone at input.

OPERATING RANGES

PARAMETER	MIN.	TYP.	MAX.	UNITS
V _{DD}	4	8 ¹	9	Volts
I _{DD}	50	-	150	mA
Case Temperature	-40	-	70 [*]	°C

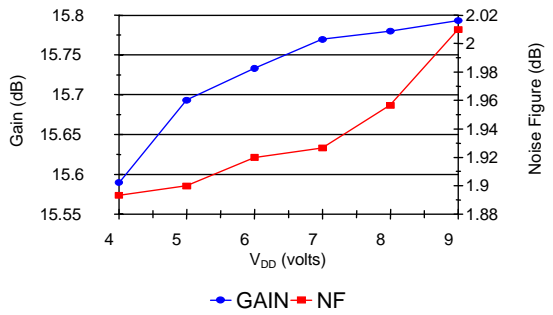
Gain and Noise Figure vs Frequency

T_c = 25 deg C, V_{DD} = +8V



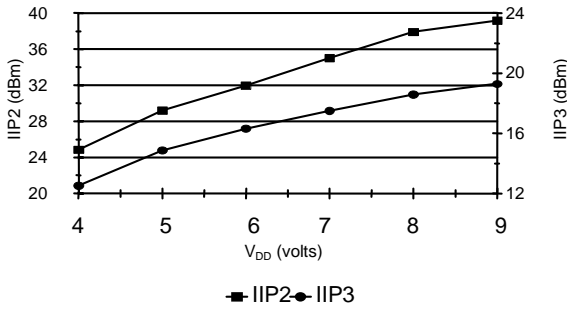
Gain and Noise Figure vs. V_{DD}

T_c = 25 deg C, RF = 500 MHz



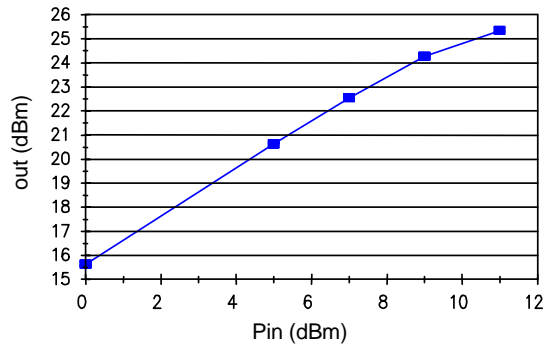
IIP2, IIP3 vs. V_{DD}

T_c = 25 deg C



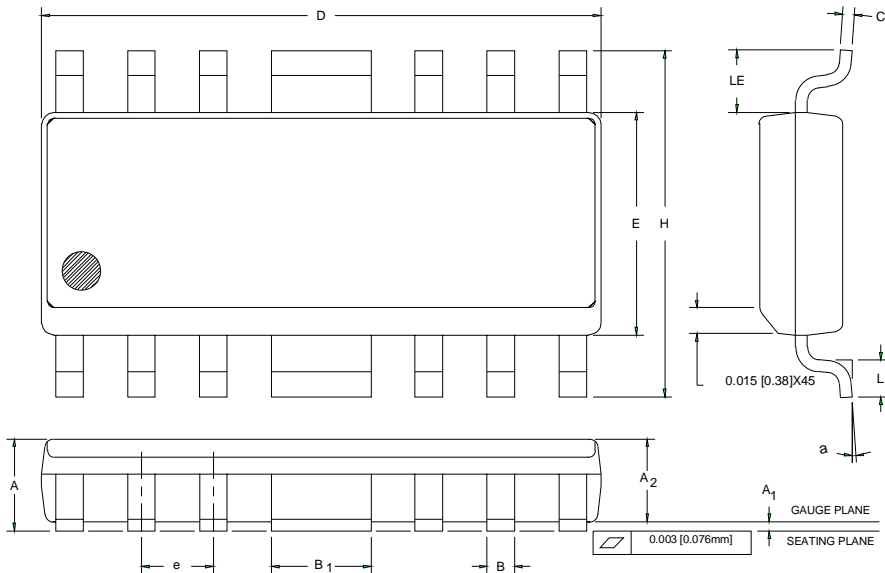
Pin vs. Pout

T_c = 25 deg C, V_{DD} = +8V, RF = 500 MHz



* Notes:

- IIP2 Measured at 986.5 MHz, Input = two tones (55.25 MHz and 931.25 MHz) at - 10 dBm.
- IIP3 Measured at 986.5 MHz, Input = two tones (986.5 MHz and 992.5 MHz) at - 10 dBm.



S _W /D _L	INCHES		MILLIMETERS		NOTE
	MIN.	MAX.	MIN.	MAX.	
A	0.058	0.068	1.47	1.73	
A ₁	0.004	0.010	0.10	0.25	
A ₂	0.055	0.065	1.40	1.65	
B	0.013	0.020	0.33	0.50	
B ₁	0.062	0.070	1.58	1.78	
C	0.008	0.010	0.20	0.25	4
D	0.380	0.400	9.66	10.16	2
E	0.150	0.160	3.81	4.06	3
e	0.050 BSC		1.27 BSC		
H	0.226	0.244	5.74	6.20	
L	0.016	0.040	0.41	1.02	
LE	0.030	—	0.76	—	
a	0	8	0	8	

NOTES:

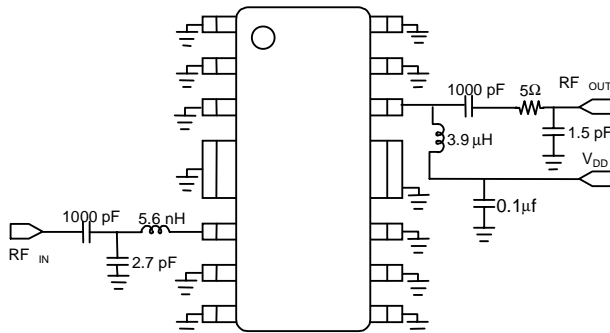
1. CONTROLLING DIMENSION: INCHES
2. DIMENSION 'D' DOES NOT INCLUDE MOLD FLASH, PROTRUSIONS OR GATE BURRS. MOLD FLASH, PROTRUSIONS AND GATE BURRS SHALL NOT EXCEED 0.006 [0.15mm] PER SIDE.
3. DIMENSION 'E' DOES NOT INCLUDE INTER-LEAD FLASH OR PROTRUSIONS. INTER-LEAD FLASH AND PROTRUSIONS SHALL NOT EXCEED 0.010 [0.25mm] PER SIDE.
4. LEAD THICKNESS AFTER PLATING TO BE 0.013 [0.33mm] MAXIMUM.

SPECIFICATION: 98000-006

SUBJECT: PUBLISHED OUTLINE,
16 LEAD BATWING SOIC PKG.

EXTERNAL TEST CIRCUIT

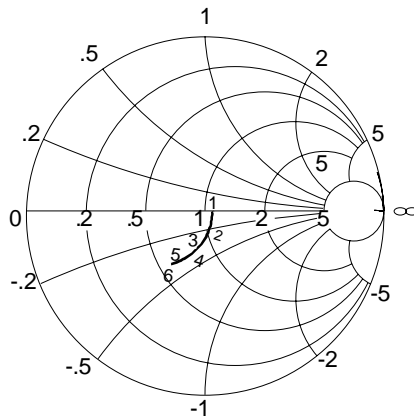
PINFUNCTION	
1	GND
2	GND
3	NC
4	GND
5	GND
6	RF IN
7	NC
8	GND
9	GND
10	NC
11	NC
12	GND
13	GND
14	RF OUT
15	NC
16	GND



INPUT IMPEDANCE

START: 0.050 GHz

STOP: 1.00 GHz



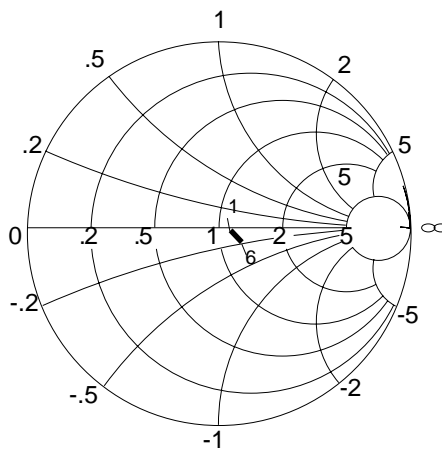
Measured in 75 Ω System

1:	0.050 GHz 79.76 Ω - 4.79 jΩ
2:	0.20 GHz 77.88 Ω - 13.21 jΩ
3:	0.40 GHz 70.02 Ω - 21.83 jΩ
4:	0.6 GHz 59.63 Ω - 26.56 jΩ
5:	0.8 GHz 49.91 Ω - 26.56 jΩ
6:	1.0 GHz 41.77 Ω - 25.15 jΩ

OUTPUT IMPEDANCE

START: 0.050 GHz

STOP: 1.00 GHz



Measured in 75 Ω System

1:	0.050 GHz 83.9 Ω - 8.1 jΩ
2:	0.20 GHz 84.17 Ω - 1.19 jΩ
3:	0.40 GHz 85.38 Ω - 2.27 jΩ
4:	0.6 GHz 87.64 Ω - 3.82 jΩ
5:	0.8 GHz 90.20 Ω - 6.60 jΩ
6:	1.0 GHz 93.57 Ω - 11.76 jΩ

NOTES

NOTES



ANADIGICS, Inc.
35 Technology Drive
Warren, New Jersey 07059
Tel: (908) 668-5000
Fax: (908) 668-5132

<http://www.anadigics.com>
Mktg@anadigics.com

IMPORTANT NOTICE

ANADIGICS, Inc. reserves the right to make changes to its products or discontinue any product at any time without notice. The Advanced Product data sheets and product specifications contained in this data sheet are subject to change prior to a products formal introduction. The information in this data sheet has been carefully checked and is assumed to be reliable. However, ANADIGICS assumes no responsibility for inaccuracies. ANADIGICS strongly urges customers to verify that the information they are using is current before placing orders.

WARNING

ANADIGICS products are not intended for use in life support appliances, devices, or systems. Use of an ANADIGICS product in any such application without written consent is prohibited.