

# Designer's™ Data Sheet

## Axial Lead Rectifiers

... employing the Schottky Barrier principle in a large area metal-to-silicon power diode. State-of-the-art geometry features chrome barrier metal, epitaxial construction with oxide passivation and metal overlap contact. Ideally suited for use as rectifiers in low-voltage, high-frequency inverters, free wheeling diodes, and polarity protection diodes.

- Extremely Low  $v_f$
- Low Power Loss/High Efficiency
- Low Stored Charge, Majority Carrier Conduction

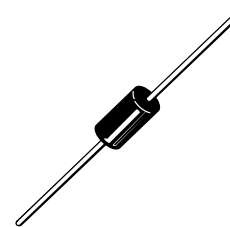
### Mechanical Characteristics:

- Case: Epoxy, Molded
- Weight: 1.1 gram (approximately)
- Finish: All External Surfaces Corrosion Resistant and Terminal Leads are Readily Solderable
- Lead and Mounting Surface Temperature for Soldering Purposes: 220°C Max. for 10 Seconds, 1/16" from case
- Shipped in plastic bags, 5,000 per bag
- Available Tape and Reeled, 1500 per reel, by adding a "RL" suffix to the part number
- Polarity: Cathode indicated by Polarity Band
- Marking: 1N5820, 1N5821, 1N5822

**1N5820**  
**1N5821**  
**1N5822**

1N5820 and 1N5822 are  
Motorola Preferred Devices

**SCHOTTKY BARRIER  
RECTIFIERS**  
**3.0 AMPERES**  
**20, 30, 40 VOLTS**



**CASE 267-03  
PLASTIC**

### MAXIMUM RATINGS

Rating	Symbol	1N5820	1N5821	1N5822	Unit
Peak Repetitive Reverse Voltage Working Peak Reverse Voltage DC Blocking Voltage	$V_{RRM}$ $V_{RWM}$ $V_R$	20	30	40	V
Non-Repetitive Peak Reverse Voltage	$V_{RSM}$	24	36	48	V
RMS Reverse Voltage	$V_{R(RMS)}$	14	21	28	V
Average Rectified Forward Current (2) $V_{R(equiv)} \leq 0.2 V_{R(dc)}$ , $T_L = 95^\circ\text{C}$ ( $R_{\theta JA} = 28^\circ\text{C/W}$ , P.C. Board Mounting, see Note 2)	$I_O$	← 3.0 →			A
Ambient Temperature Rated $V_{R(dc)}$ , $P_F(AV) = 0$ $R_{\theta JA} = 28^\circ\text{C/W}$	$T_A$	90	85	80	°C
Non-Repetitive Peak Surge Current (Surge applied at rated load conditions, half wave, single phase 60 Hz, $T_L = 75^\circ\text{C}$ )	$I_{FSM}$	← 80 (for one cycle) →			A
Operating and Storage Junction Temperature Range (Reverse Voltage applied)	$T_J, T_{stg}$	← -65 to +125 →			°C
Peak Operating Junction Temperature (Forward Current applied)	$T_{J(pk)}$	← 150 →			°C

### \*THERMAL CHARACTERISTICS (Note 2)

Characteristic	Symbol	Max	Unit
Thermal Resistance, Junction to Ambient	$R_{\theta JA}$	28	°C/W

- (1) Pulse Test: Pulse Width = 300  $\mu\text{s}$ , Duty Cycle = 2.0%.  
 (2) Lead Temperature reference is cathode lead 1/32" from case.  
 \* Indicates JEDEC Registered Data for 1N5820-22.

**Designer's Data for "Worst Case" Conditions** — The Designer's Data Sheet permits the design of most circuits entirely from the information presented. SOA Limit curves — representing boundaries on device characteristics — are given to facilitate "worst case" design.

**Preferred** devices are Motorola recommended choices for future use and best overall value.

# 1N5820 1N5821 1N5822

## \*ELECTRICAL CHARACTERISTICS (T<sub>L</sub> = 25°C unless otherwise noted) (2)

Characteristic	Symbol	1N5820	1N5821	1N5822	Unit
Maximum Instantaneous Forward Voltage (1) (i <sub>F</sub> = 1.0 Amp) (i <sub>F</sub> = 3.0 Amp) (i <sub>F</sub> = 9.4 Amp)	V <sub>F</sub>	0.370 0.475 0.850	0.380 0.500 0.900	0.390 0.525 0.950	V
Maximum Instantaneous Reverse Current @ Rated dc Voltage (1) T <sub>L</sub> = 25°C T <sub>L</sub> = 100°C	i <sub>R</sub>	2.0 20	2.0 20	2.0 20	mA

(1) Pulse Test: Pulse Width = 300 μs, Duty Cycle = 2.0%.

(2) Lead Temperature reference is cathode lead 1/32" from case.

\* Indicates JEDEC Registered Data for 1N5820–22.

### NOTE 1 — DETERMINING MAXIMUM RATINGS

Reverse power dissipation and the possibility of thermal runaway must be considered when operating this rectifier at reverse voltages above 0.1 V<sub>RWM</sub>. Proper derating may be accomplished by use of equation (1).

$$T_{A(max)} = T_{J(max)} - R_{\theta JA} P_{F(AV)} - R_{\theta JA} P_{R(AV)} \quad (1)$$

where T<sub>A(max)</sub> = Maximum allowable ambient temperature  
T<sub>J(max)</sub> = Maximum allowable junction temperature  
(125°C or the temperature at which thermal runaway occurs, whichever is lowest)  
P<sub>F(AV)</sub> = Average forward power dissipation  
P<sub>R(AV)</sub> = Average reverse power dissipation  
R<sub>θJA</sub> = Junction-to-ambient thermal resistance

Figures 1, 2, and 3 permit easier use of equation (1) by taking reverse power dissipation and thermal runaway into consideration. The figures solve for a reference temperature as determined by equation (2).

$$T_R = T_{J(max)} - R_{\theta JA} P_{R(AV)} \quad (2)$$

Substituting equation (2) into equation (1) yields:

$$T_{A(max)} = T_R - R_{\theta JA} P_{F(AV)} \quad (3)$$

Inspection of equations (2) and (3) reveals that T<sub>R</sub> is the ambient temperature at which thermal runaway occurs or where T<sub>J</sub> = 125°C, when forward power is zero. The transition from one boundary condition to the other is evident on the curves of Figures 1, 2, and 3 as a difference in the rate of change of the slope in the vicinity of 115°C.

The data of Figures 1, 2, and 3 is based upon dc conditions. For use in common rectifier circuits, Table 1 indicates suggested factors for an equivalent dc voltage to use for conservative design, that is:

$$V_{R(equiv)} = V_{(FM)} \times F \quad (4)$$

The factor F is derived by considering the properties of the various rectifier circuits and the reverse characteristics of Schottky diodes.

EXAMPLE: Find T<sub>A(max)</sub> for 1N5821 operated in a 12-volt dc supply using a bridge circuit with capacitive filter such that I<sub>DC</sub> = 2.0 A (I<sub>F(AV)</sub> = 1.0 A), I<sub>(FM)</sub>/I<sub>(AV)</sub> = 10, Input Voltage = 10 V<sub>(rms)</sub>, R<sub>θJA</sub> = 40°C/W.

Step 1. Find V<sub>R(equiv)</sub>. Read F = 0.65 from Table 1,  
∴ V<sub>R(equiv)</sub> = (1.41) (10) (0.65) = 9.2 V.

Step 2. Find T<sub>R</sub> from Figure 2. Read T<sub>R</sub> = 108°C  
@ V<sub>R</sub> = 9.2 V and R<sub>θJA</sub> = 40°C/W.

Step 3. Find P<sub>F(AV)</sub> from Figure 6. \*\*Read P<sub>F(AV)</sub> = 0.85 W  
@  $\frac{I_{(FM)}}{I_{(AV)}} = 10$  and I<sub>F(AV)</sub> = 1.0 A.

Step 4. Find T<sub>A(max)</sub> from equation (3).  
T<sub>A(max)</sub> = 108 - (0.85) (40) = 74°C.

\*\*Values given are for the 1N5821. Power is slightly lower for the 1N5820 because of its lower forward voltage, and higher for the 1N5822. Variations will be similar for the MBR-prefix devices, using P<sub>F(AV)</sub> from Figure 7.

Table 1. Values for Factor F

Circuit	Half Wave		Full Wave, Bridge		Full Wave, Center Tapped*†	
	Resistive	Capacitive*	Resistive	Capacitive	Resistive	Capacitive
Sine Wave	0.5	1.3	0.5	0.65	1.0	1.3
Square Wave	0.75	1.5	0.75	0.75	1.5	1.5

\*Note that V<sub>R(PK)</sub> ≈ 2.0 V<sub>in(PK)</sub>. †Use line to center tap voltage for V<sub>in</sub>.

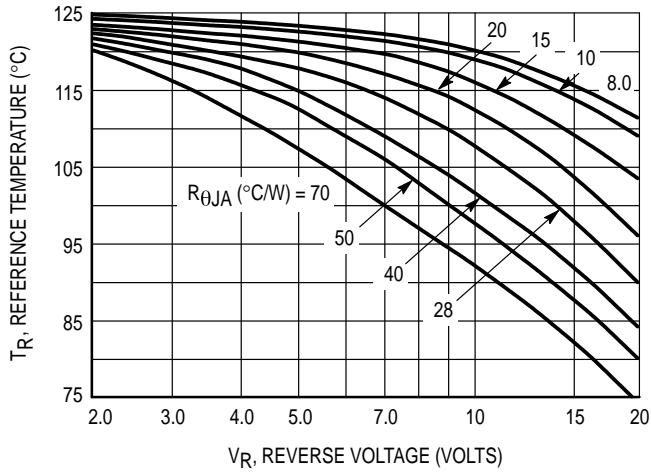


Figure 1. Maximum Reference Temperature  
1N5820

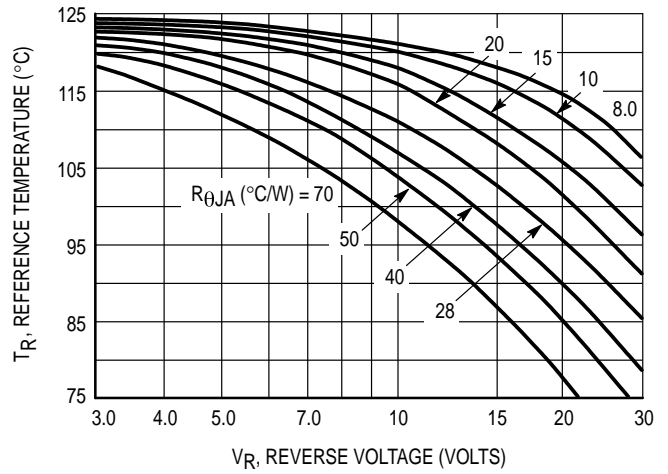


Figure 2. Maximum Reference Temperature  
1N5821

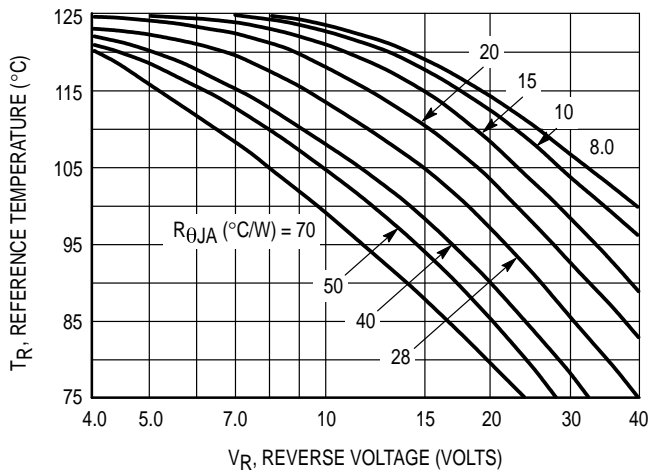


Figure 3. Maximum Reference Temperature  
1N5822

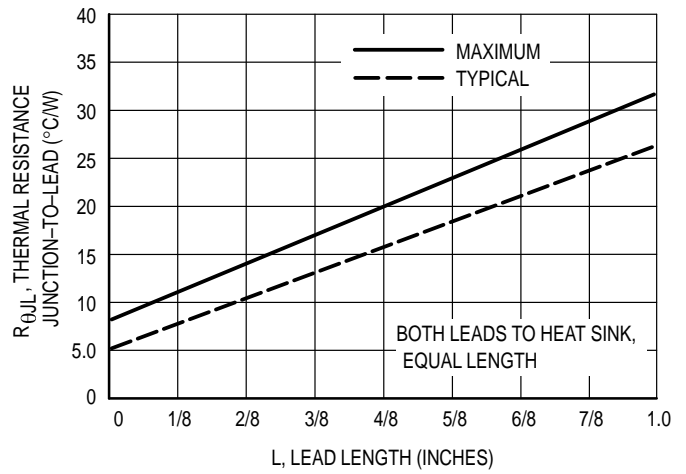


Figure 4. Steady-State Thermal Resistance

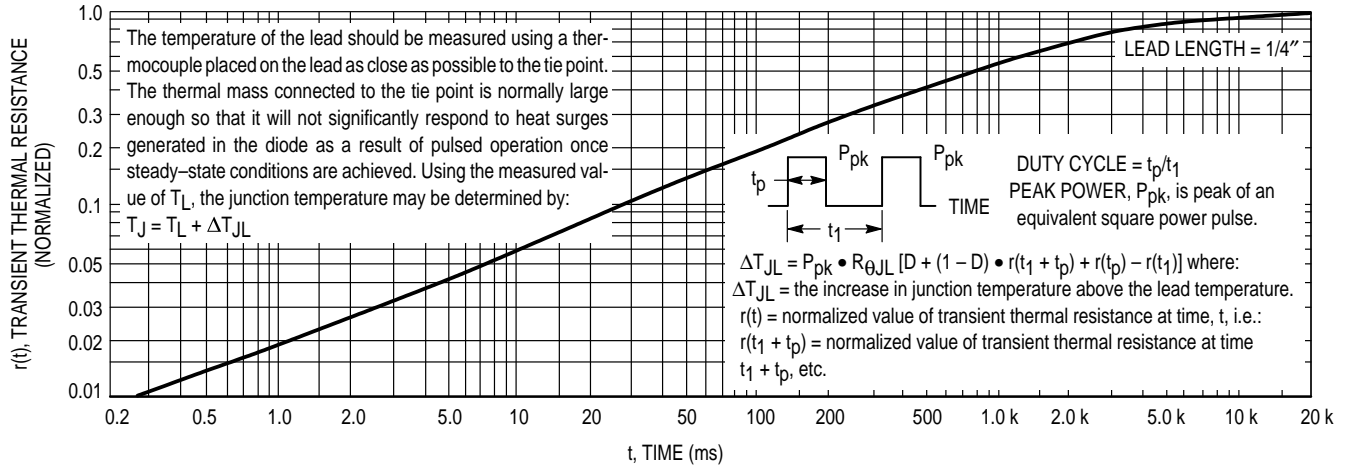


Figure 5. Thermal Response

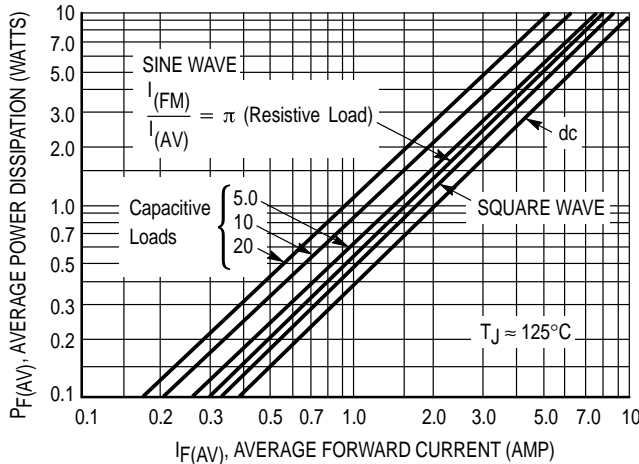
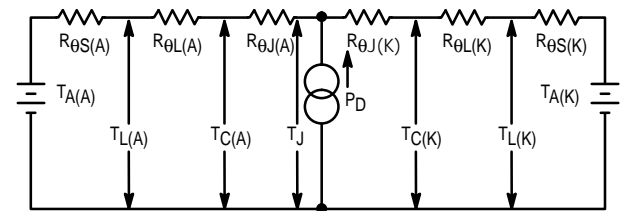


Figure 6. Forward Power Dissipation 1N5820–22

NOTE 3 — APPROXIMATE THERMAL CIRCUIT MODEL



Use of the above model permits junction to lead thermal resistance for any mounting configuration to be found. For a given total lead length, lowest values occur when one side of the rectifier is brought as close as possible to the heat sink. Terms in the model signify:

- $T_A$  = Ambient Temperature
  - $T_C$  = Case Temperature
  - $T_L$  = Lead Temperature
  - $T_J$  = Junction Temperature
  - $R_{\theta S}$  = Thermal Resistance, Heat Sink to Ambient
  - $R_{\theta L}$  = Thermal Resistance, Lead to Heat Sink
  - $R_{\theta J}$  = Thermal Resistance, Junction to Case
  - $P_D$  = Total Power Dissipation =  $P_F + P_R$
  - $P_F$  = Forward Power Dissipation
  - $P_R$  = Reverse Power Dissipation
- (Subscripts (A) and (K) refer to anode and cathode sides, respectively.) Values for thermal resistance components are:  
 $R_{\theta L} = 42^\circ\text{C/W/in}$  typically and  $48^\circ\text{C/W/in}$  maximum  
 $R_{\theta J} = 10^\circ\text{C/W}$  typically and  $16^\circ\text{C/W}$  maximum  
 The maximum lead temperature may be found as follows:  
 $T_L = T_J(\text{max}) - \Delta T_{JL}$   
 where  $\Delta T_{JL} \approx R_{\theta JL} \cdot P_D$

NOTE 2 — MOUNTING DATA

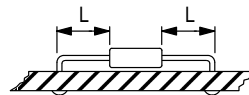
Data shown for thermal resistance junction-to-ambient ( $R_{\theta JA}$ ) for the mountings shown is to be used as typical guideline values for preliminary engineering, or in case the tie point temperature cannot be measured.

TYPICAL VALUES FOR  $R_{\theta JA}$  IN STILL AIR

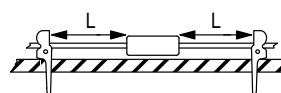
Mounting Method	Lead Length, L (in)				$R_{\theta JA}$
	1/8	1/4	1/2	3/4	
1	50	51	53	55	$^\circ\text{C/W}$
2	58	59	61	63	$^\circ\text{C/W}$
3	28				$^\circ\text{C/W}$

Mounting Method 1

P.C. Board where available copper surface is small.



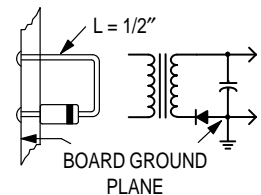
Mounting Method 2



VECTOR PUSH-IN TERMINALS T-28

Mounting Method 3

P.C. Board with 2-1/2" x 2-1/2" copper surface.



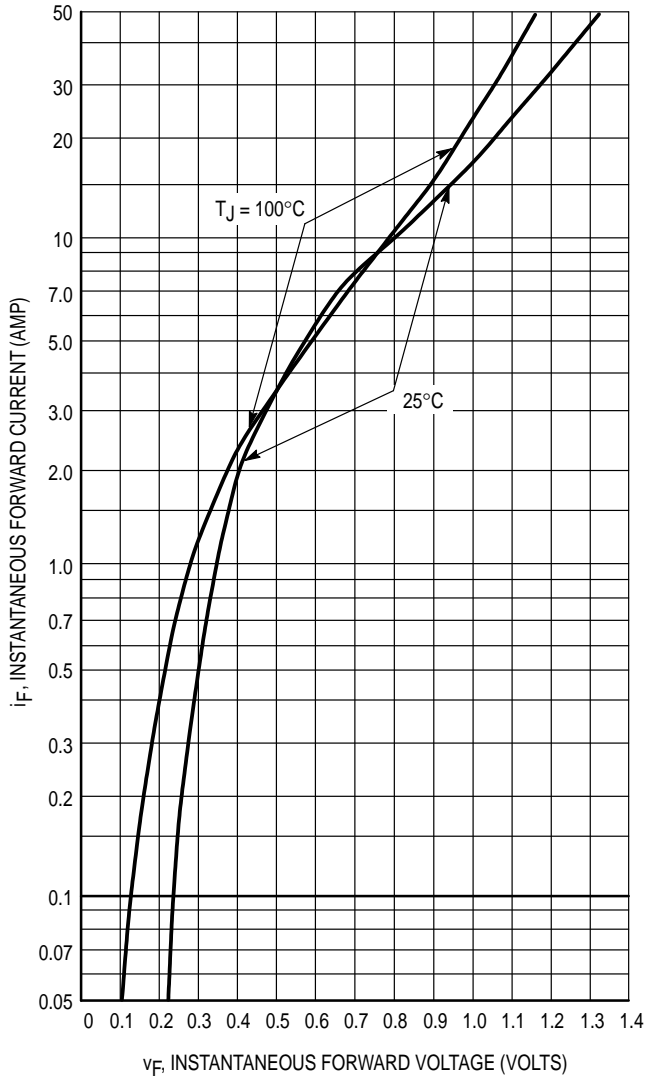


Figure 7. Typical Forward Voltage

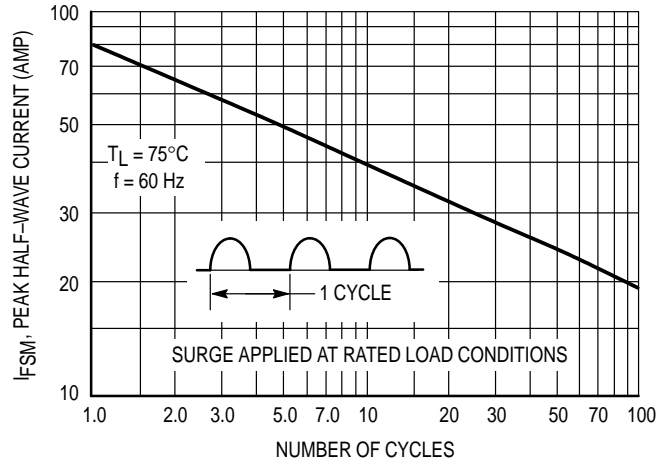


Figure 8. Maximum Non-Repetitive Surge Current

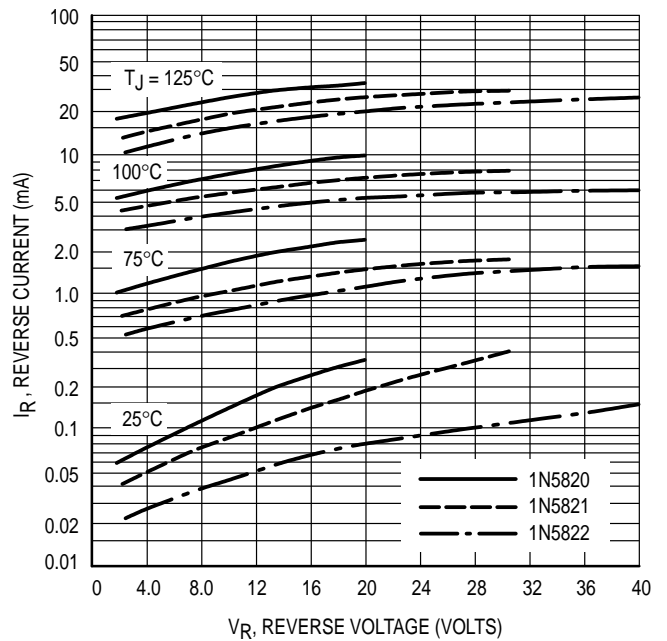


Figure 9. Typical Reverse Current

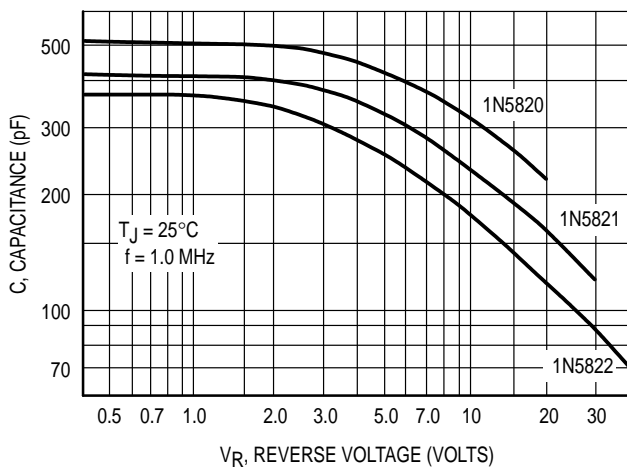
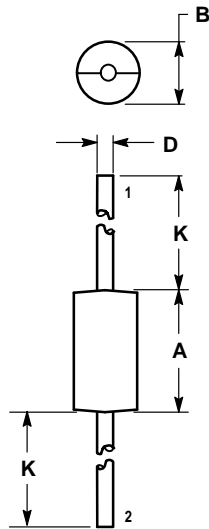


Figure 10. Typical Capacitance

**NOTE 4 — HIGH FREQUENCY OPERATION**

Since current flow in a Schottky rectifier is the result of majority carrier conduction, it is not subject to junction diode forward and reverse recovery transients due to minority carrier injection and stored charge. Satisfactory circuit analysis work may be performed by using a model consisting of an ideal diode in parallel with a variable capacitance. (See Figure 11.)

PACKAGE DIMENSIONS



- NOTES:  
 1. DIMENSIONING AND TOLERANCING PER ANSI Y14.5M, 1982.  
 2. CONTROLLING DIMENSION: INCH.

DIM	INCHES		MILLIMETERS	
	MIN	MAX	MIN	MAX
A	0.370	0.380	9.40	9.65
B	0.190	0.210	4.83	5.33
D	0.048	0.052	1.22	1.32
K	1.000	—	25.40	—

STYLE 1:  
 PIN 1. CATHODE  
 2. ANODE

CASE 267-03  
 ISSUE C

Motorola reserves the right to make changes without further notice to any products herein. Motorola makes no warranty, representation or guarantee regarding the suitability of its products for any particular purpose, nor does Motorola assume any liability arising out of the application or use of any product or circuit, and specifically disclaims any and all liability, including without limitation consequential or incidental damages. "Typical" parameters which may be provided in Motorola data sheets and/or specifications can and do vary in different applications and actual performance may vary over time. All operating parameters, including "Typicals" must be validated for each customer application by customer's technical experts. Motorola does not convey any license under its patent rights nor the rights of others. Motorola products are not designed, intended, or authorized for use as components in systems intended for surgical implant into the body, or other applications intended to support or sustain life, or for any other application in which the failure of the Motorola product could create a situation where personal injury or death may occur. Should Buyer purchase or use Motorola products for any such unintended or unauthorized application, Buyer shall indemnify and hold Motorola and its officers, employees, subsidiaries, affiliates, and distributors harmless against all claims, costs, damages, and expenses, and reasonable attorney fees arising out of, directly or indirectly, any claim of personal injury or death associated with such unintended or unauthorized use, even if such claim alleges that Motorola was negligent regarding the design or manufacture of the part. Motorola and are registered trademarks of Motorola, Inc. Motorola, Inc. is an Equal Opportunity/Affirmative Action Employer.

Mfax is a trademark of Motorola, Inc.

How to reach us:

USA/EUROPE/Locations Not Listed: Motorola Literature Distribution;  
 P.O. Box 5405, Denver, Colorado 80217. 303-675-2140 or 1-800-441-2447

JAPAN: Nippon Motorola Ltd.; Tatsumi-SPD-JLDC, 6F Seibu-Butsuryu-Center,  
 3-14-2 Tatsumi Koto-Ku, Tokyo 135, Japan. 81-3-3521-8315

Mfax™: RMFAX0@email.sps.mot.com – TOUCHTONE 602-244-6609  
 INTERNET: http://Design-NET.com

ASIA/PACIFIC: Motorola Semiconductors H.K. Ltd.; 8B Tai Ping Industrial Park,  
 51 Ting Kok Road, Tai Po, N.T., Hong Kong. 852-26629298

