

Directional Coupler 0.81–0.96 GHz



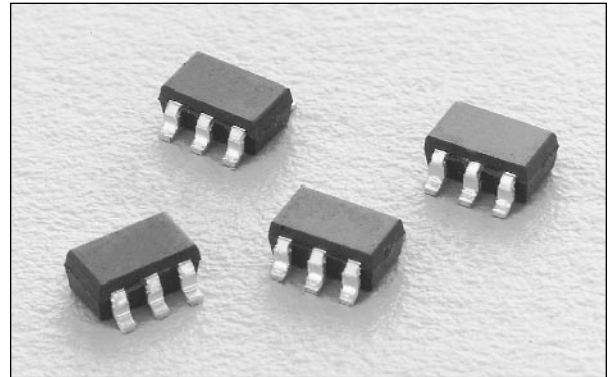
DC08-73

Features

- Low Cost
- Low Profile
- Small SOT-6 Package
- Tape & Reel

Description

The DC08-73 is a monolithic directional coupler tailored to the 0.81–0.96 GHz band. It offers low loss, good isolation, good input/output matching and exceptional coupling repeatability. It may be used at higher frequencies when stronger coupling is required. It is available in the SOT-6 leaded surface mount package.

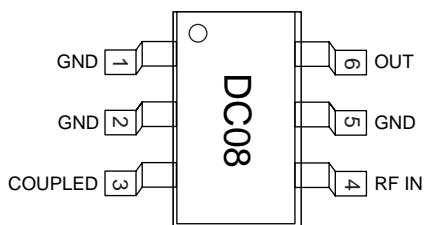


Electrical Specifications at 25°C

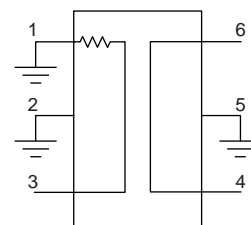
Parameter	Min.	Typ.	Max.	Unit
Frequency	0.81		0.96	GHz
Insertion Loss ¹		.35	.45	dB
Isolation	21	22		dB
Input VSWR		1.05:1	1.3:1	
Output VSWR		1.05:1	1.3:1	
Coupling	14	15	16	dB
Coupled Port VSWR		1.2:1	1.3:1	

1. Coupling loss included.

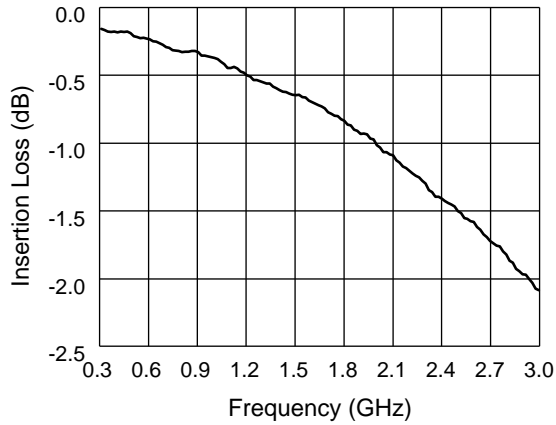
Pin Out



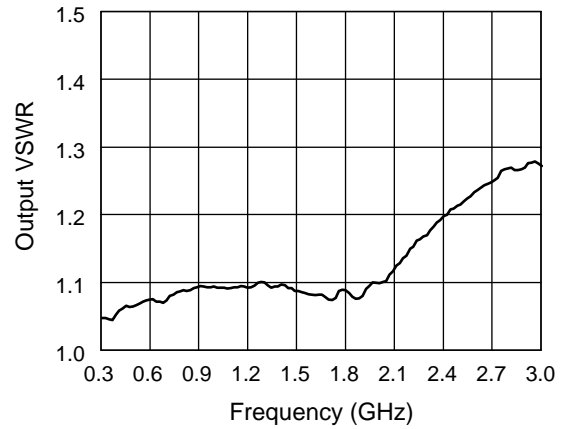
Block Diagram



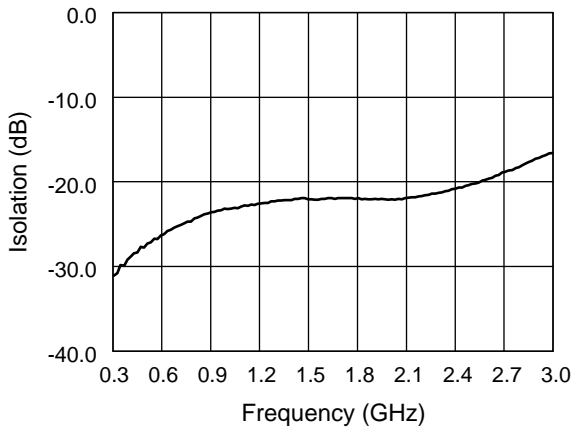
Typical Performance Data



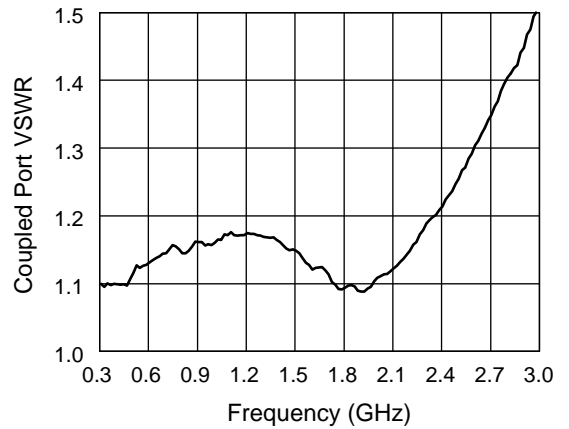
Insertion Loss vs. Frequency



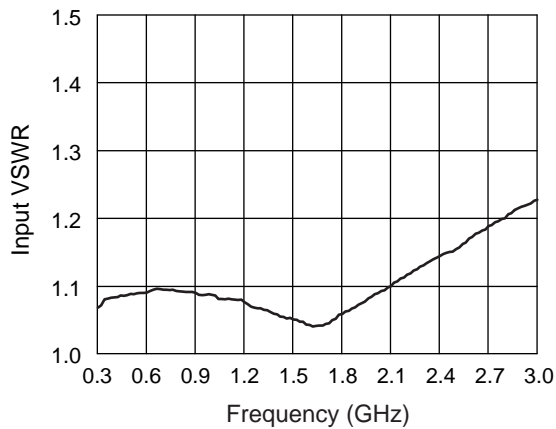
Output VSWR vs. Frequency



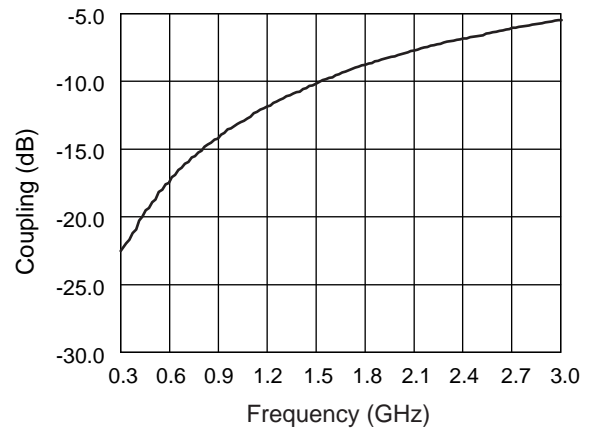
Isolation vs. Frequency



Coupled Port VSWR vs. Frequency



Input VSWR vs. Frequency



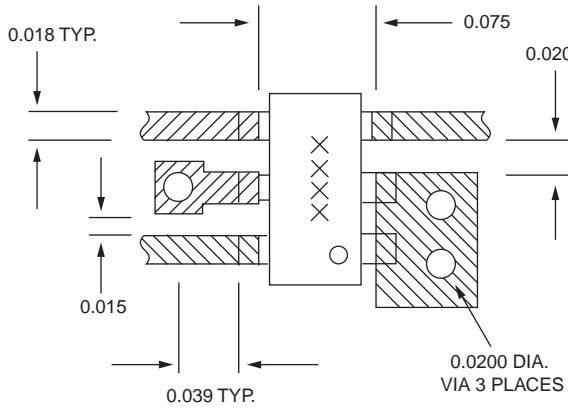
Coupling vs. Frequency

Absolute Maximum Ratings

Characteristic	Value
Input Power	+4 W
Operating Temperature	-40°C to +85°C
Storage Temperature	-65°C to +150°C
Electrostatic Discharge	+125 V

Note: Exceeding these parameters may cause irreversible damage.

Recommended Board Layout



Material is 10 mil FR4.

SOT-6

