

# MF1121-1

FOR IF FILTER OF PCS HAND HELD

MF1121-1

## DESCRIPTION

This SAW filter for the IF filter circuit of PCS hand held

## FEATURES

1. SMD package insures small size, lightweight.
2. Adjustment free.
3. Low insertion loss and high stop band attenuation.
4. Wide and sharp passband characteristics.
5. High stability and reliability.
6. Designed for reflow solderings.

## APPLICATION

- PCS Handheld

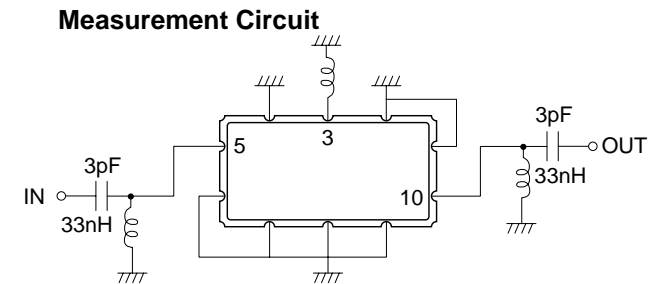
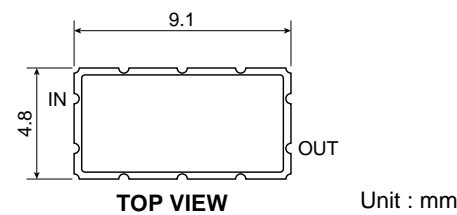
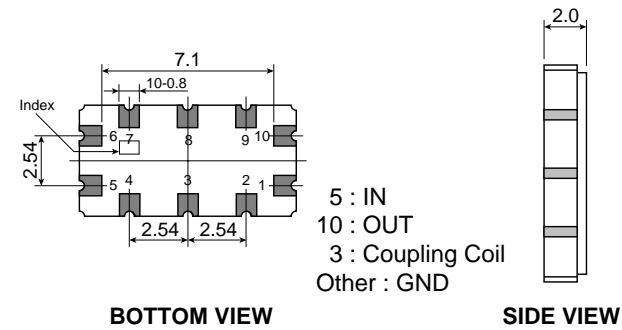
## ELECTRICAL PERFORMANCE

### PRELIMINARY

Item	Frequency range	Min.	Typ.	Max.	Units
Center Frequency (fo)	336.00 MHz	---	---	---	---
Insertion Loss at fo	336.00 MHz	4.5	5.5	7.0	dB
Pass Band Ripple	fo -50 kHz ~ fo +70 kHz	---	0.8	1.5	dBp-p
	fo -80 kHz ~ fo +100 kHz	---	1.0	3.0	
Group Delay Ripple	fo -80 kHz ~ fo +100 kHz	---	1.1	2.0	μSEC
Stop band Attenuation (relative to 0 dB)	fo -78.0 MHz ~ fo -3.0 MHz	50.0	65.0	---	dB
	fo -3.0 MHz ~ fo -0.8 MHz	45.0	60.0	---	
	fo -800 kHz ~ fo -600 kHz	40.0	54.0	---	
	fo -600 kHz ~ fo -400 kHz	25.0	60.0	---	
	fo +400 kHz ~ fo +600 kHz	25.0	38.0	---	
	fo +600 kHz ~ fo +800 kHz	40.0	50.0	---	
	fo +800 kHz ~ fo +3.0 MHz	45.0	55.0	---	
	fo +3.0 MHz ~ fo +20.0 MHz	40.0	50.0	---	
fo +20 MHz ~ fo +78.0 MHz	50.0	58.0	---		
Package Size	4.8 × 9.1 × 2.0 mm				

Operating temperature range: -25 ~ +85°C

## PACKAGE OUTLINE DIMENSIONS



## MF1121-1 TYPICAL CHARACTERISTICS

